

Likely Matters



"Never doubt that a small group of thoughtful, committed citizens can change the world. Indeed it is the only thing that ever has".
Margaret Mead

Buy Local This Christmas

Top 10 Reasons to shop locally

Did you know buying locally first can help build strong sustainable local economies?
Information adapted from shoplocal.ca

- 1) **Stimulating the Local Business Economy**
- 2) **Local Jobs and Better Jobs**
- 3) **More Local Investment**
- 4) **Create More Local Character**
- 5) **The Environmental Impact**
- 6) **Continually Building Community**
- 7) **Better Customer Service and Satisfaction**
- 8) **Add to Cultural Diversity**
- 9) **More Customer Choice**
- 10) **Support for the Community**



Photo- A beautiful winter view of the gun range on Dancing Bill. To join the Likely Archery, Rod and Gun Club Gary Zorn, President 250-790-2292



Photo above- Over a dozen vendors selling their holiday wares at the Christmas Craft Fair this year. The annual community event brought out more people than last year. The Craft Fair took place on December 3, 2011 from 10-2 in the school gym. Santa Clause made a special guest appearance!



December, 2011
Volume 1, Issue 10

Inside this issue:

LXCF News 2

QRRC Workshop Series 3

Fire and Rescue 3

Jokes- Questions you can Never Answer 3

Christmas Play 3

Gold Price 3

Community Notices 4

??? Do You ???

- Have an advertisement you would like to see in this newsletter?
- Have a submission for Likely Matters Newsletter?

If so, please email to Erin Robinson:
robinsoe@unbc.ca



LXCF News Page

Community forestry is good for the forests, good for the people who live and work there, and good for the buyers and users of wood.



Long-time resident, Eric Brown-John is working in the community of Likely again. Eric is working on CPM (cutting permit-M) opening the road and building in-block roads and landings.

CPM is one of +/- 40 blocks (totaling 15,000m²) 33 of which are fir trap-tree sites. Our Forest Stewardship Plan (FSP) is handed in but not yet passed. We applied for and received an exemption to harvest without the FSP on the fir beetle and trap tree sites. This allows us to address our forest health issues while awaiting the FSP.

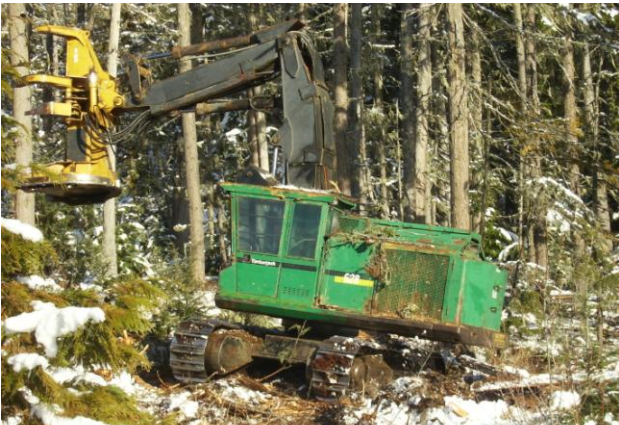


Photo above- Bruce Monsen falling 5 hectares of dead hemlock at Winkley Creek.



Photo above- Adam Anderson skidding logs on Dancing Bill.



Photo above- Mike Paquette (pictured) is working with Joanne Campbell and Ron Woolsey on a CRD funded fuel-management project at Winkley Creek.

Special Announcement
Delivering specialty logs to the market is proving to be difficult as many drivers have retrained. The high demand for the few trucks that are left is defiantly noticeable by the attitude on the other end of the phone. So... If you know anyone with a self-loading truck, please call Robin at 790-2458.

Happy Holidays from the LXCF!



QRRC Workshop Series Wraps Up

On November 23 and 24 the QRRC hosted its third and final workshop in the SSHRC funded *Stakeholder Workshop Series- Water/Climate Change/ Salmon*. Seventeen representatives from the local area came together for this two day event. Workshops like this are important in the face of uncertainty regarding: climate change, access to fresh water, and the continuance of healthy wild salmon populations, ensuring that channels between stakeholders and governments are well networked will help to develop the appropriate management strategies. ☀



;) Questions you can never answer ☺

- Why doesn't Tarzan have a beard?
- Why do we press harder on the remote control when we know the batteries are flat?
- Why do banks charge a fee on 'insufficient funds' when they know there is not enough?
- Why do people say 'slept like a baby' when babies wake up every two hours?
- Do married people live longer than single ones or does it just seem longer?
- What is the speed of darkness?
- If the temperature is zero outside today and it's going to be twice as cold tomorrow, how cold will it be?

Likely & District Volunteers Fire and Rescue Membership Renewal

*Come to the
Likely
Community
Hall at 7:00
pm on
December 6,
2011*

Likely School Christmas Play

Take a break from the hustle and bustle of the holiday season and come enjoy the performing arts in Likely! This year, the Likely Community School Theatre Company is putting on *A Home for Christmas*. The entire production was written and directed by Likely's own Venta Rutkauskas, with the help of her collaborators, the school children. The Likely Christmas Play will open on December 15 at 7pm in the school gymnasium. Ho-Ho-Hope to see you there!




Gold Price- \$1717.25 November 28, 2011

Gold Price Performance CAD Change	Amount	%
Today	6.81	0.39%
30 Days	32.04	1.85%
6 Months	264.22	17.61%
1 Year	368.36	26.39%
5 Years	1039.22	143.33%


goldprice.org


Christmas commemorates the birth of Jesus, the central figure of the Christian religion. The date is not known to be the actual birth date of Jesus, and may have initially been chosen to correspond with the date of the winter solstice on the ancient Roman calendar, or one of various ancient winter festivals. Christmas is central to the holiday season, and in Christianity marks the beginning of the larger season of Christmastide, which lasts for twelve days.

Community Notices

 **Chamber of Commerce**
December 5 at 7pm Hall


 **Seniors Meeting**
No meeting in December


 **Likely Fire and Rescue**
AGM December 6 at 7pm Hall


 **Likely Community**
December 15
School Christmas Play
"A Home for Christmas"
Likely School Gym 7pm


 **Woodshop**
Wednesdays 10am-2pm




 **Reminder!** 2012 Likely
Chamber of Commerce
membership fees due in Jan

 **Bible Study**
Cancelled during Christmas-time new
session TBA in January

 **Library**
Mondays 3:15pm-7pm
Wednesdays 1pm-5pm

 **Church**
Prayer 9:30am
Main Service 10:30am

 **Christmas Service**
December 24 7pm
December 25 **no service on Christmas**

 **Ready Set Learn!**
No RSL in December



Local Organizations

- 1) **Cedar Point Park Board**
Peter McKeown- 790-2207
- 2) **Likely Fire/Rescue**
Elaine Lucas 790-2555
- 3) **Likely Cemetery Society**
Howard Fenton 790-2360
- 4) **Likely Chapel** 790-2392
- 5) **Likely Community Hall**
Elaine Lucas 790-2555
- 6) **Likely Community School**
Assoc.
Kim Davis 790-2320
- 7) **Likely Library**
Vicki Schill 790-2234
- 8) **Post Office** 790-2322
- 9) **Likely Seniors Assoc.**
Marvin and Gail Doney 790-2018
- 10) **Likely Archery, Rod and Gun**
Club Gary Zorn, President
250-790-2292

Emergency Numbers

Emergency: 911
Forest Fire: 1-800-952-7277
Poison Centre: 1-800-567-8911

Important Numbers

Hospital 392-4411
RCMP 392-6211
Inquiry BC
1800-663-7867
CRD Emergency Operations
Centre 250-398-5117



Valley General Store



This month at Valley
General **25% off**
Fishing Rods

Mon-Sat 9am-8pm
(Sundays 10am-8pm)

**Support Local-
Eat Fresh**

Cedar Creek Bed and Breakfast

Craig and Ingrid
Ritson are proud to
announce they are
open for business!
Join them at **Cedar**
Creek Bed and
Breakfast on scenic
Quesnel Lake.



Snowmobilers
Welcome



To book your stay call- 250-
790-2061 or
toll free in North America
1-888-790-2061

LXCF Contact Information

Likely Xat'sull

Community Forest Ltd.
PO Box 233, Likely BC
V0L1N0

Soda Creek Band

Thomas Phillips, Soda
Creek
250-989-2323

*Likely Community
Forest Society*

Robin Hood, Likely BC
sherwood@thelakebc.ca

Published by

Erin Robinson 790-2468
robinsoe@unbc.ca