



Spa Xksuutks (Port Essington)

Kelsey Wiebe, Heritage Park Museum



Robert Cunningham. BC Ghost Towns. <http://itsmysite.com/cgi-bin/itsmy/go.exe?page=1&domain=1&webdir=bchistory>.

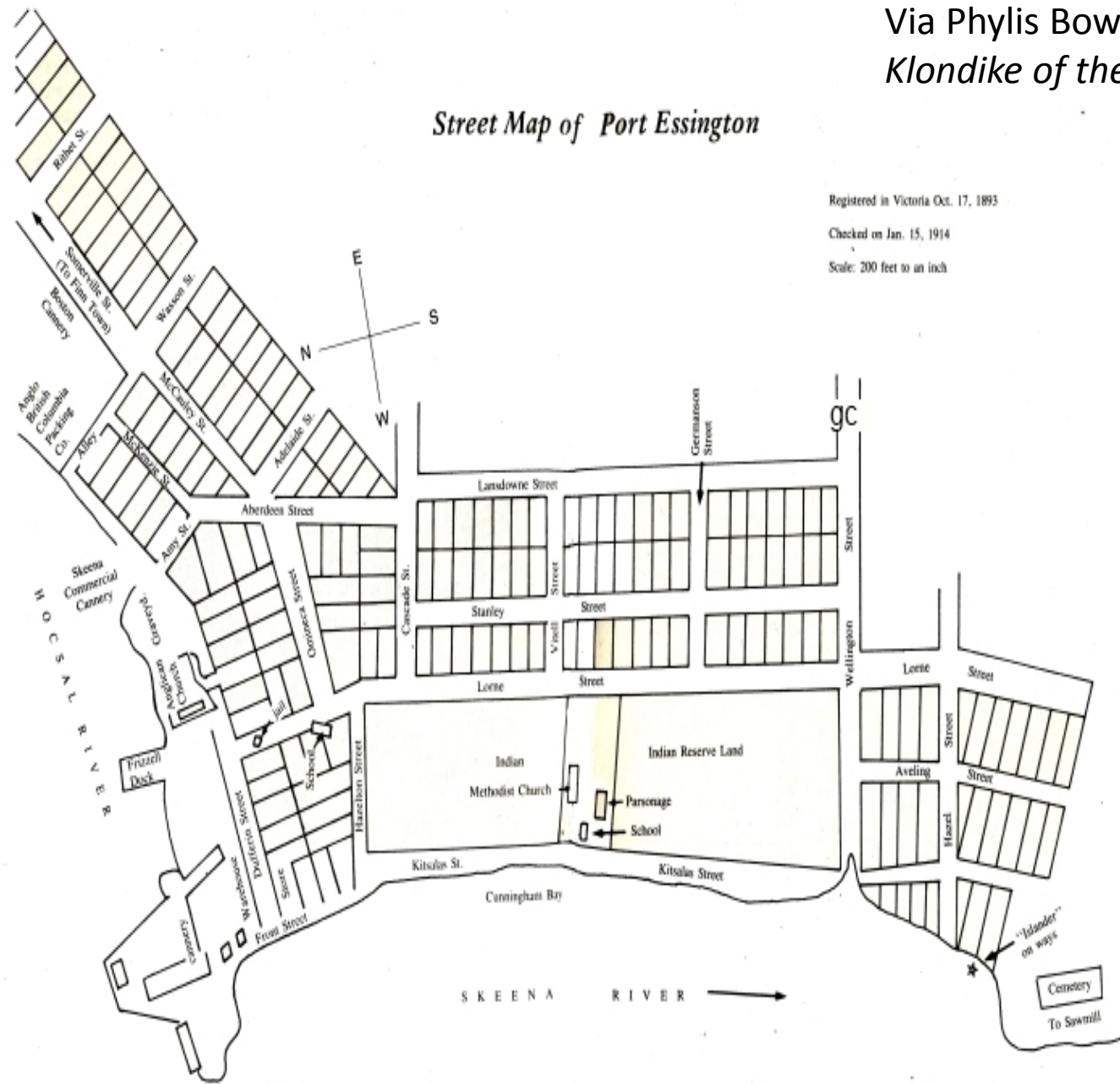
Via Phylis Bowman,
Klondike of the Skeena.

Street Map of Port Essington

Registered in Victoria Oct. 17, 1893

Checked on Jan. 15, 1914

Scale: 200 feet to an inch



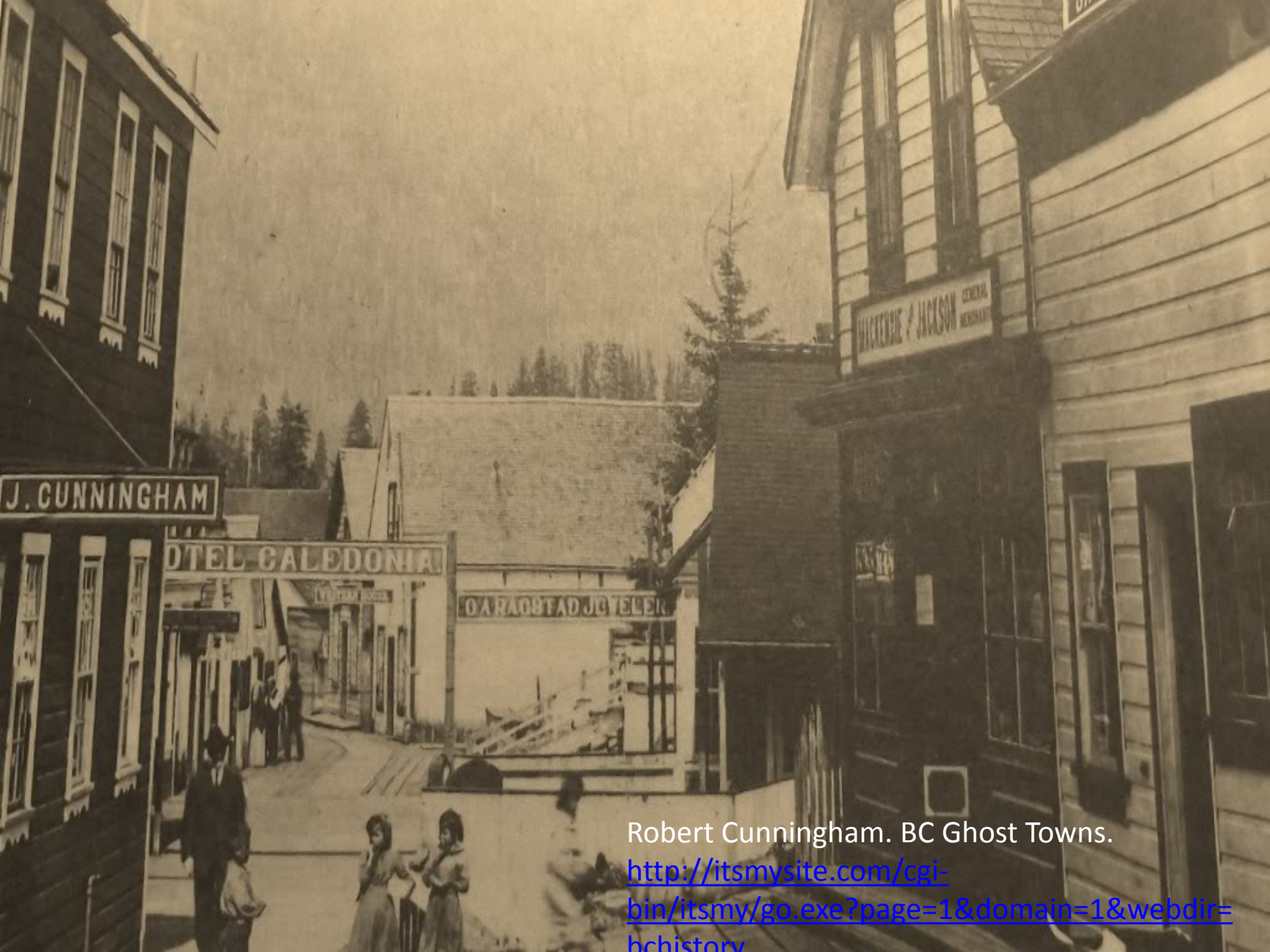


*Indian Reservation
Port Essington*

'Indian Reservation,'
Port Essington, 1909.
United Church of
Canada Archives
, From
Mission to
Partnership
Collection,
93.049
item
#384 N.



Port Essington; Cunningham's Store in Left Foreground, 189-. Photographed by Hannah or Richard Maynard. BC Archives A-04170.



J. CUNNINGHAM

HOTEL CALEDONIA

MACKENZIE & JACKSON
GENERAL MERCHANTS

O' A RAOSTAD JG TELER

Robert Cunningham. BC Ghost Towns.
<http://itsmysite.com/cgi-bin/itsmy/go.exe?page=1&domain=1&webdir=bchistory>



'Shops along Shore at
Port Essington, BC.'
Note on back reads 'R.
Cunningham & Sons -
Probably Port
Essington,' and 'NW
coast canoe.' Historical
North Coast
Photograph Album,
Northern BC Archives &
Special Collections
2006.45.11.



Port Essington Skeena River
1888.

Port Essington,
Skeena River, 1888.
UBC Special
Collections BC124.



Steamer "Port Simpson" at Port Essington.
190-. BC Archives B-01266.



Title: Students at the Port Essington Day School.

189-. BC Archives B-05843.



Accessed From Host on Sat Oct 15 19:18:52 2011

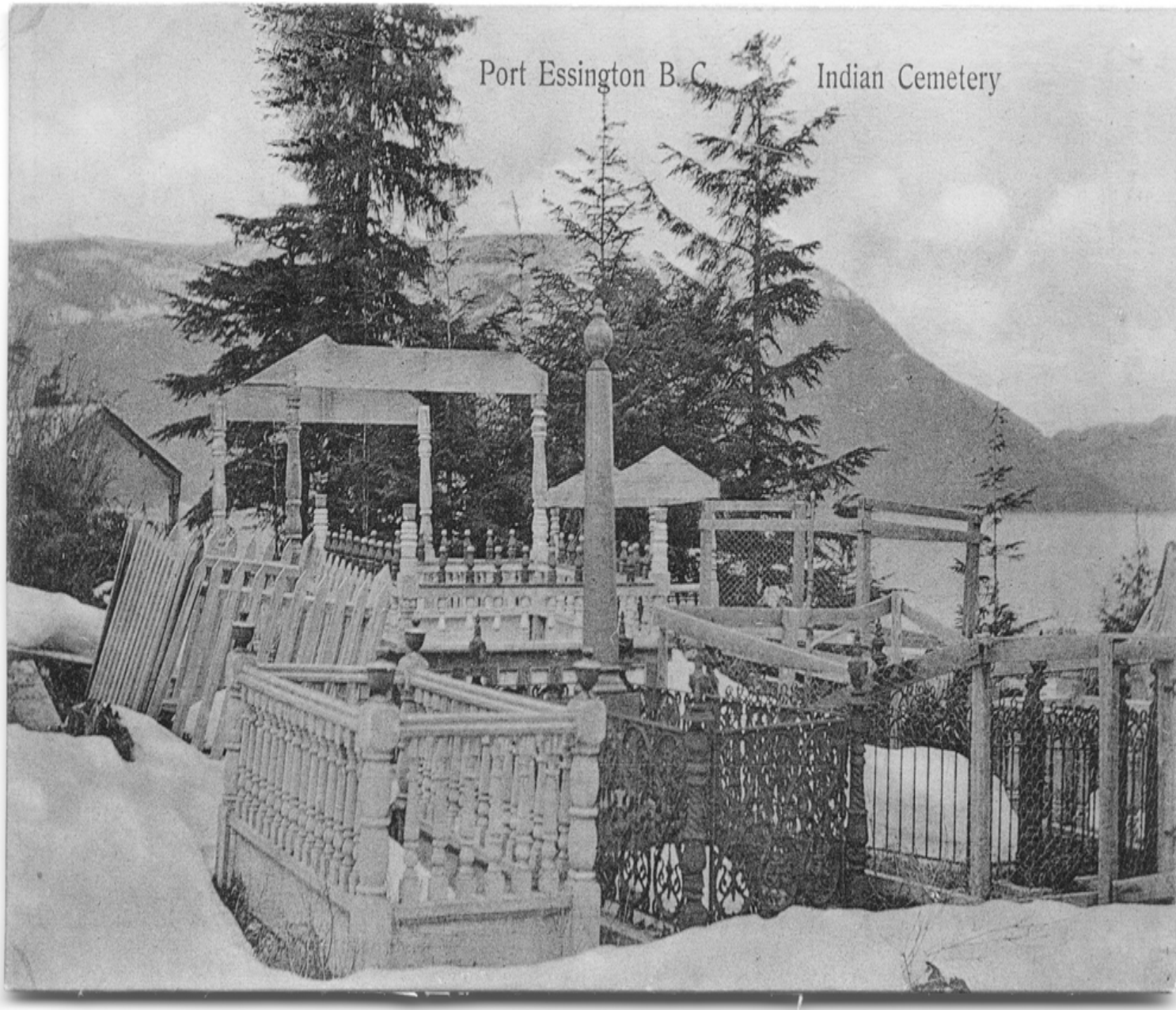
Title: Indian Revival Meeting at Port Essington, 1897.

'Indian Wedding, Port Essington,' 1931.
Photographed by Dr. Large and Mr. Thomas.
United Church of Canada Archives, From
Mission to Partnership Collection, 93.049 item
#388.





A street in Port
Essington, circa
1899 or 1900.
Photographed by
Major James Skitt
Matthews. City of
Vancouver
Archives AM54-S4.



Port Essington B.C. Indian Cemetery

'Indian Cemetery,' Port Essington, 1909. United Church of Canada Archives, From Mission to Partnership Collection, 93.049 item #385.

Salmon Fishing,
Skeena River, B.C.



Note on back of photograph: '... The canning industry is carried on extensively here. Indians, Chinamen, and Japanese are principally employed in the work. The Indians come here from the Skeena River, Queen Charlotte Islands, Kitamaat, and Pt. Simpson to work during the summer. Numerous hotels however prove a great and sad disadvantage often robbing them not only of their hard earned money, by their manhood also. Rev. Mr. Freeman, Meth. Missionary there school, church and hospital.'

Drying the nets, Port Essington, between 1905 and 1909.
Photographed by Dr. R. W. Large. United Church of Canada Archives,
From Mission to Partnership Collection, 93.049 item #2779 N.



'Joseph Restaurant,' Port Essington. No date.
BC Archives F-07637.



Port Essington Cannery Workers
Quarters, circa 1914. BC Archives E-01331.

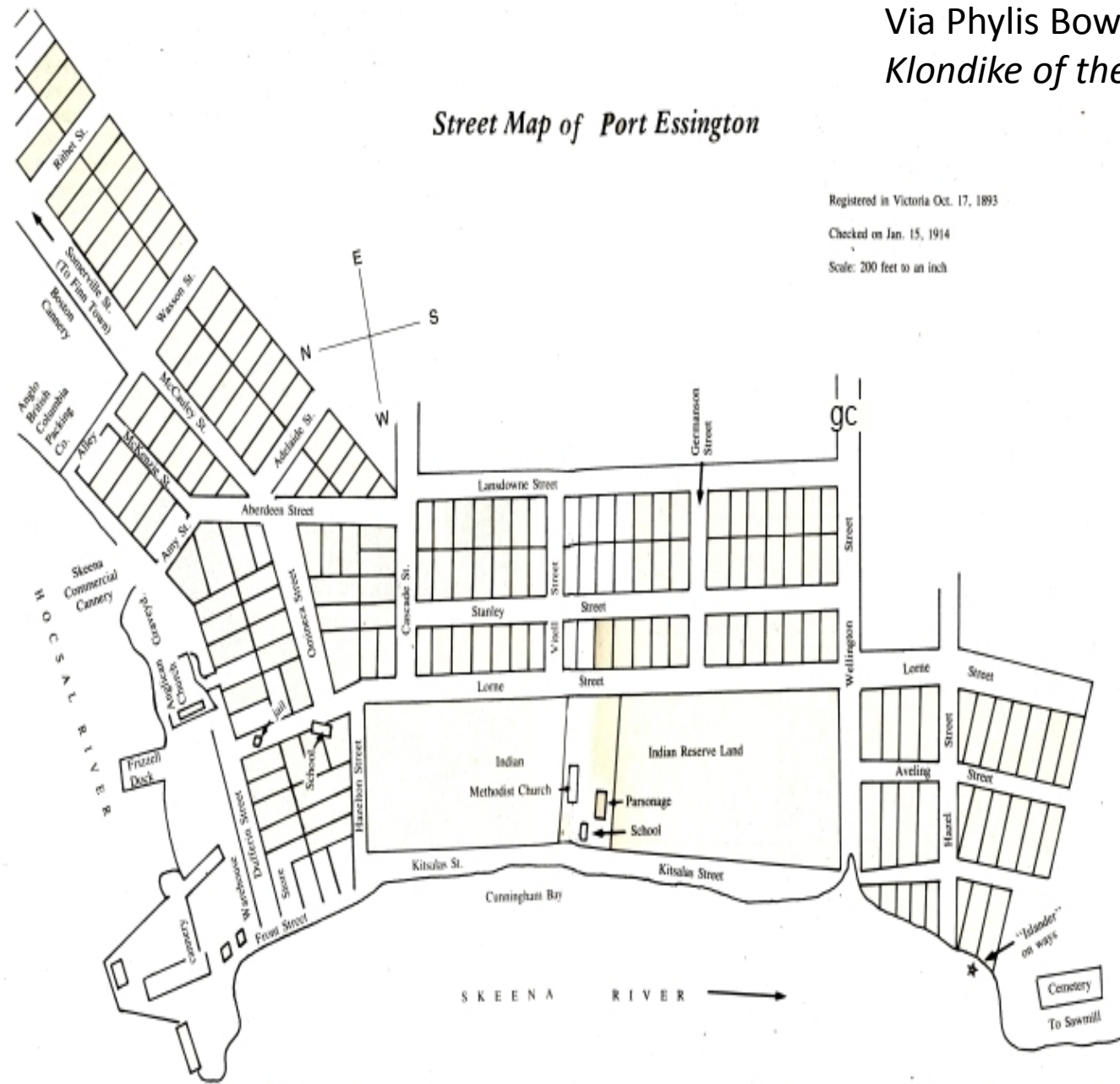
Via Phylis Bowman,
Klondike of the Skeena.

Street Map of Port Essington

Registered in Victoria Oct. 17, 1893

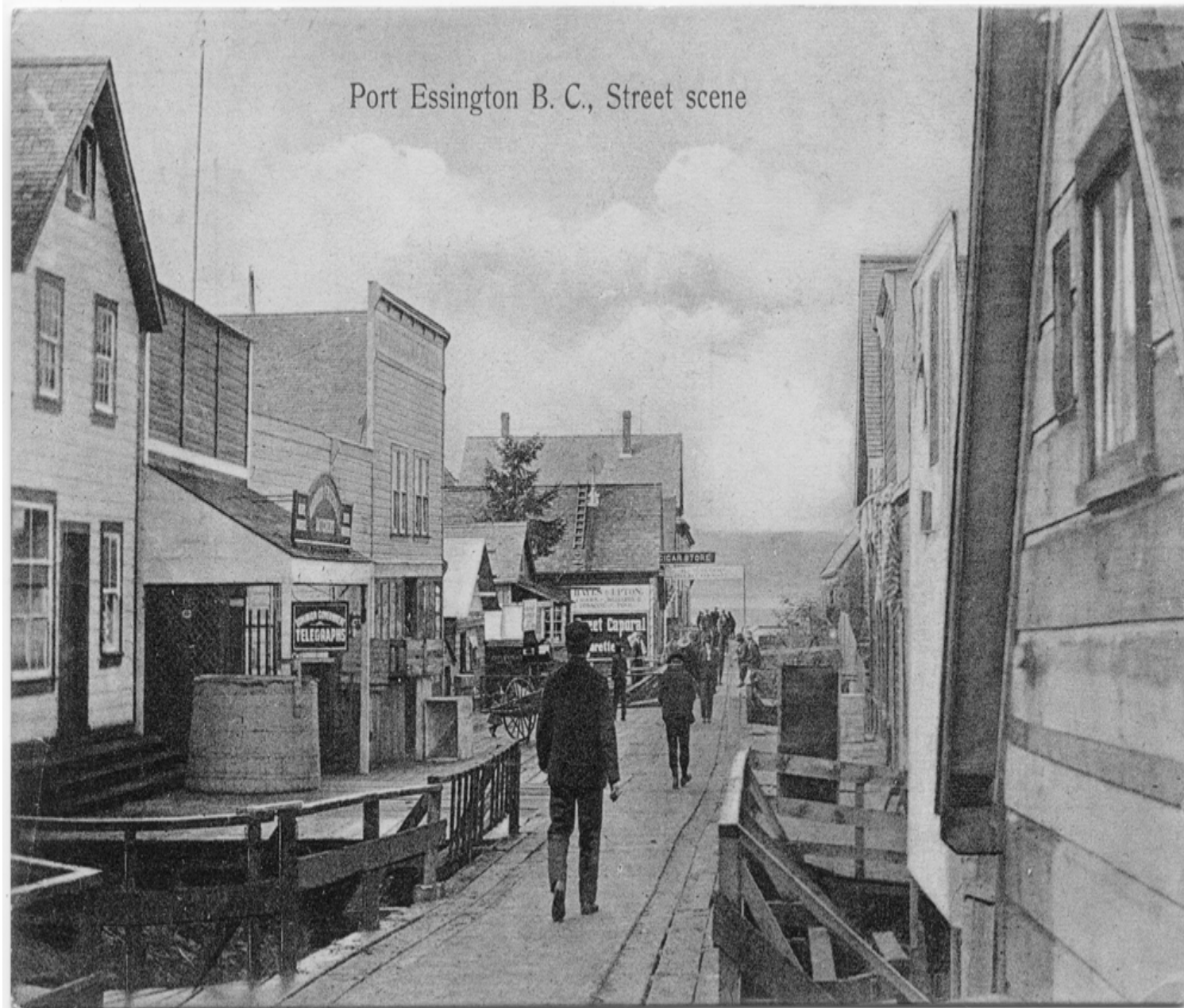
Checked on Jan. 15, 1914

Scale: 200 feet to an inch





Port Essington, circa 1926. Photographed by Major James Skitt Matthews. City of Vancouver Archives AM54-S4.



Port Essington Street Scene, 1909. United Church of Canada Archives, From Mission to Partnership Collection, 93.049 item #383.



Port Essington; Frizzell's Wharf and the Skeena Commercial Cannery, circa 1915. BC Archives E-01326.



'Port Essington Indian Village,' circa 1915. BC Archives E-01337.



Title: Port Essington, Dufferin Street

Dufferin Street, Port Essington, 192-.



Dufferin Street, Port Essington, circa 1903.
BC Archives E-01330.



'View of Port Essington, BC from Bridge,' circa 1873-1920. The Archdeacon W. H. Collison fonds, Northern BC Archives & Special Collections 2009.7.1.066. Note on back reads: "The staff at the summer Hospital at Port Essington to accommodate the native fishermen & families also other people on the Skeena. Centre row: Miss Clark, myself & Miss Hall. Front row: our cook Salamoe & helper on the boat. Top L. : Summer doctor Dr. Ashley Armstrong, caretaker Mr. Brown, laundry man".



Interior of Port
Essington
grocery store,
1907. Sign
above table
reads 'Morrow
& Frizzell.'
North Coast &
Central BC
Postcard
Collection,
Northern BC
Archives &
Special
Collections
2011.3.1.7.



Skeena Commercial Cannery at Port Essington, 1911. BC Archives C-04940.

Via Phylis Bowman,
Klondike of the Skeena.

Street Map of Port Essington

Registered in Victoria Oct. 17, 1893

Checked on Jan. 15, 1914

Scale: 200 feet to an inch

