

Looking Back, Looking Forward: A Community Workshop on Cumulative Impacts in the Peace River Region



Tuesday November 29, 2016
Fort St. John, BC

Agenda

- 1:00 – 1:15 *Welcome and Orientation to the Cumulative Impacts Research Consortium (CIRC)*
- 1:15 – 2:30 *Perspectives on Cumulative Impacts Monitoring and Assessment*
- 2:30 – 2:45 *Break*
- 2:45 – 4:15 *Roundtable Discussions*
- 4:15 – 4:30 *Evaluation, Closing Remarks*

Understanding the cumulative community, health and environmental impacts of resource development in northern BC



Madeline Wilson

Cumulative Impacts Research Consortium (CIRC)
University of Northern British Columbia

November 29, 2016
Fort St. John, BC

NEBCRCM Fall Forum



CIRC

The Cumulative Impacts
Research Consortium

UNBC UNIVERSITY OF
NORTHERN BRITISH COLUMBIA

Introducing the Cumulative Impacts Research Consortium



Acknowledgements

Steering Committee

Present: Greg Halseth (CDI); Marleen Morris (CDI); Margot Parkes (HRI); Henry Harder (HRI); Rachael Wells (HRI); Art Fredeen (NRESi); Al Weinczysk (NRESi); Michelle Connolly (PICS); Chris Buse (Project Lead); Madeline Wilson (Communications Lead)

Past: Kyle Aben (PICS); Leanne Elliott (NRESi)

Advisory Committee

Present: John Disney; Lana Lowe; Joan Chess; Jennifer Pighin; Nicole Cross; Andy Ackerman; Viva Wolf; Richard Kabzems; Wayne Salewski; Sandra Harris; Charl Badenhorst; Alan Madrigga; Rob Spitzer

Funding Support



Pacific Institute
for Climate Solutions
Knowledge. Insight. Action.



Social Sciences and Humanities
Research Council of Canada

Conseil de recherches en
sciences humaines du Canada

Canada

CIRC

The Cumulative Impacts
Research Consortium

UNBC UNIVERSITY OF
NORTHERN BRITISH COLUMBIA

A circular graphic composed of several segments in red and blue, arranged in a ring. The segments are of varying lengths and are set against a white background. The overall appearance is that of a stylized ring or a circular path.

What are cumulative impacts?

What are cumulative impacts?

*Proposed or Actual Change could involve a policy or a project

P
A
S
T

'Upstream' drivers of change in a region/landscape of concern

PROPOSED OR ACTUAL CHANGE*

A cascade of Effects & Impacts

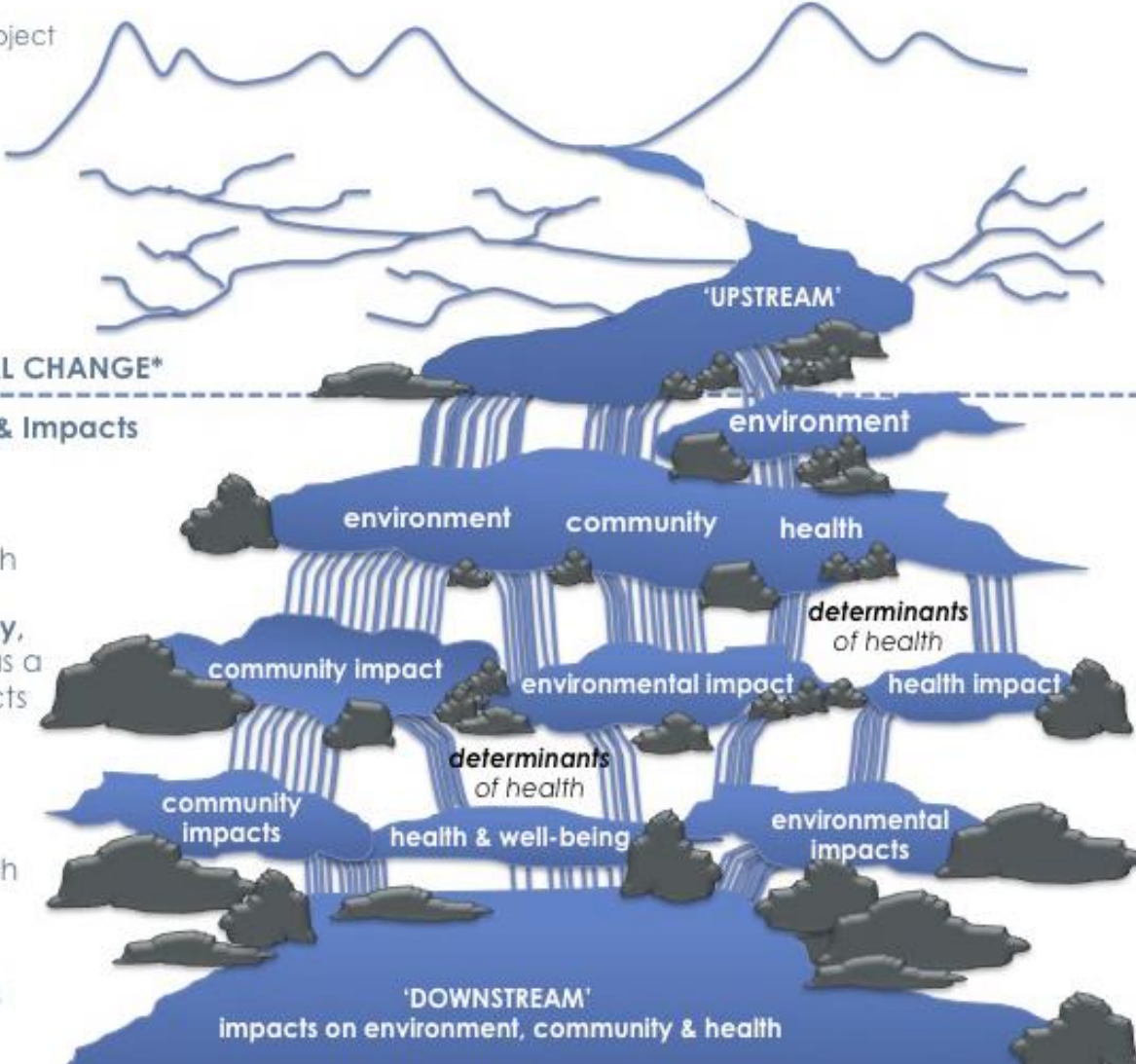
Direct Effects on environment, community and health

Impacts on community, environment & health as a consequence of effects

F
U
T
U
R
E

Indirect Impacts on environment, community and health

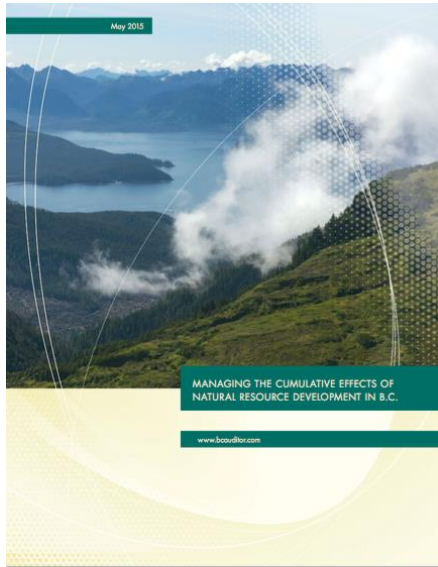
Long-term, indirect 'downstream' impacts



Source: Margot Parkes (2016) Chapter 6, *The Integration Imperative*

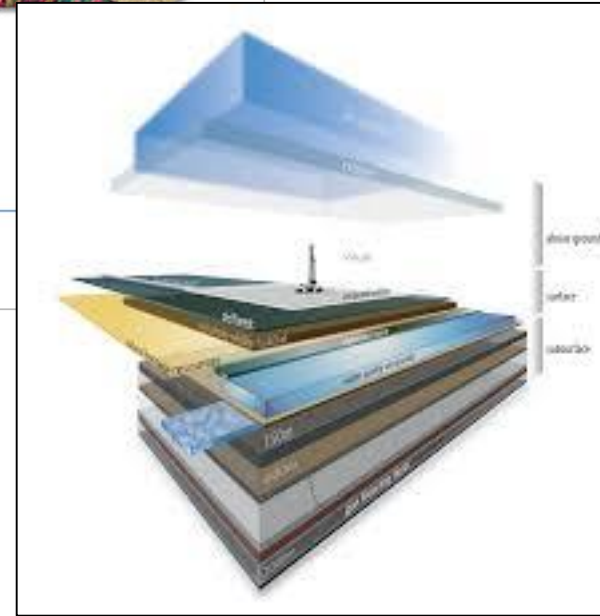
A circular graphic composed of several curved segments in shades of red and blue, arranged in a ring. The background is a light-colored wood grain. The text is centered over the graphic.

**Moving forward with integrative tools
for thoughtful action**

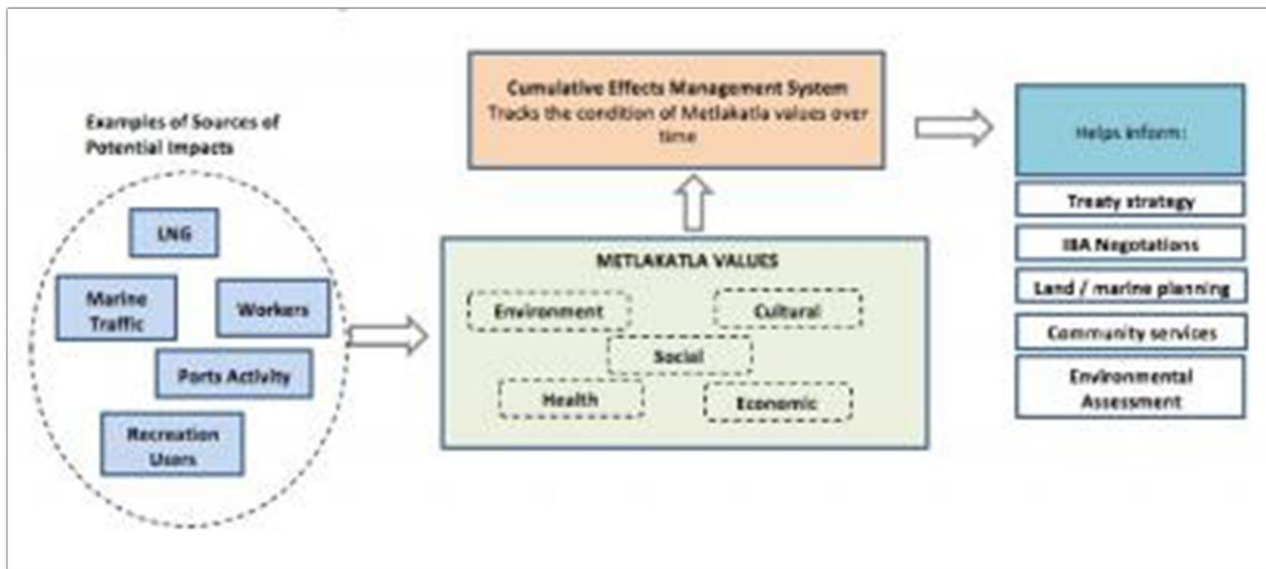
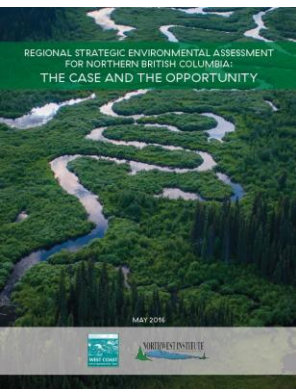


Addressing Cumulative Effects in Natural Resource Decision-Making

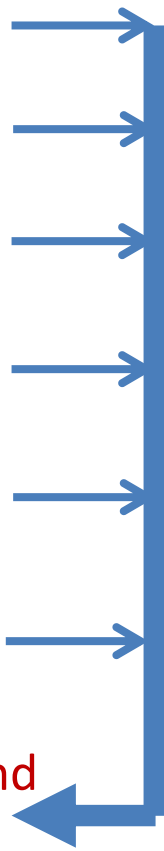
A Framework for Success



What do we know about Cumulative Impacts?



CIRC: On-going Research

1. Living library of CE Projects (PICS)
 2. Examining the 'state of the art' of CEA in BC through interjurisdictional comparative case studies (UNBC / NSERC)
 3. Examining the community impacts of unconventional natural gas development in BC along the supply chain (SSHRC)
 4. Health Impacts of Resource Extraction and Development (Northern Health/First Nations Health Authority)
 5. Socioeconomic indicator development and storage (HRI w/ Northern Health and PHSA)
 6. Analyzing the health equity impacts of unconventional natural gas development (Michael Smith Foundation for Health Research)
 7. **Developing new tools to assist communities in assessing, monitoring and planning for cumulative impacts (BC Real Estate Foundation)**
- 

“New Tools” Project Objectives

LEARN

About and participate in the practice of cumulative impacts assessment

SHARE

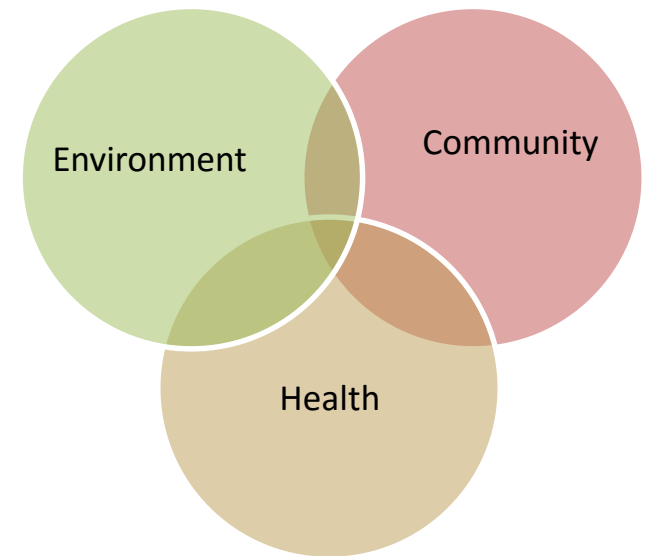
Best practices, local knowledge, experiences and ideas

ENVISION

The next generation of integrated assessment tools

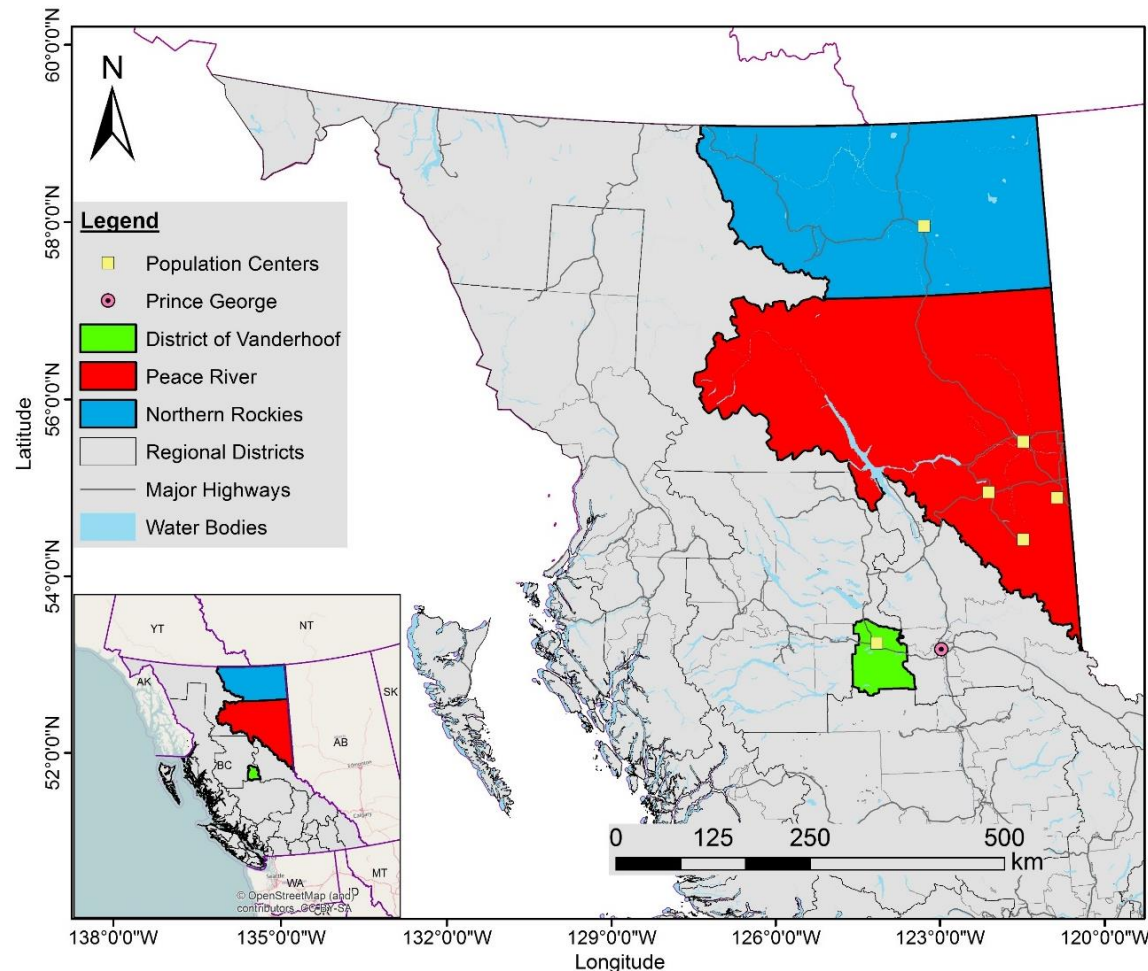
“New Tools” Foundational Elements

1. Providing a transparent forum for community members to participate in value identification
2. Building relationships
3. Bolstering third-party monitoring



“New Tools”: Case Study Communities

(2011 data)



Communities	Area (km ²)	Population
Northern Rockies	85,111	5,578
Peace River	117,391	60,082
District of Vanderhoof	13,870	4,480

“New tools”: Research Process

Phase 1: Community forums and values identification workshop

Phase 2: Community pilots

Phase 3: Community pilots in non-case study communities



“New tools”: An exercise in thinking through ‘what’s possible’?

How can we help fill capacity gaps at the local level?

Lots of possibilities based on existing tools:

- Indicator lists and data sources (Vital Signs)
- Geospatial monitoring/modeling (ABA)
- Multiple Criterion Analysis (value monitoring and weighting)
- Citizen science

We want to hear from you!

www.unbc.ca/cumulative-impacts

cumulativeimpactslivinglibrary.ca

madeline.wilson@unbc.ca | 250.960.5994

@CIRC_UNBC



CIRC

The Cumulative Impacts
Research Consortium

UNBC UNIVERSITY OF
NORTHERN BRITISH COLUMBIA

Workshop Objectives

LEARN

about
perspectives
and practices
in cumulative
impacts
assessment

SHARE

your
knowledge,
experiences
and
ideas

ENVISION

the next
generation of
integrated
assessment
tools

Informed Consent

- Please open your welcome packages to view the informed consent document
 - What is informed consent and why is it important?
 - What does participation look like?
 - What are your rights as a research participant?
 - Risks and benefits of participating
 - How can you raise any concerns about the process?

Agenda

- 1:00 – 1:15 *Welcome and Orientation to the Cumulative Impacts Research Consortium (CIRC)*
- 1:15 – 2:30 *Perspectives on Cumulative Impacts Monitoring and Assessment*
- 2:30 – 2:45 *Break*
- 2:45 – 4:15 *Roundtable Discussions*
- 4:15 – 4:30 *Evaluation, Closing Remarks*

Perspectives on Cumulative Impacts Monitoring and Assessment

- Anna Regnier, BC Ministry of Forests, Lands and Natural Resource Operations
- Sean Curry, BC Oil and Gas Commission
- Hannah Askew, West Coast Environmental Law
- Clayton Davis, McLeod Lake Indian Band

CUMULATIVE EFFECTS FRAMEWORK (CEF)



Presenter: Anna Regnier, FLNRO
November 29, 2016



Cumulative Effects Framework

- The Provincial CEF is a Natural Resource Sector (NRS) initiative
- Implementation is the responsibility of all NRS Agencies



Cumulative Effects

Changes to environmental, social and economic values caused by the combined effect of past, present and potential future activities and natural processes



CEF Phased Implementation

2012 - 2014

Proof of Concept

- *Complete demonstration Projects
- *Seek approval to start implementing

2014 - 2016

Early Development & Implementation

- *Develop Policy
- *Develop Assessment Protocols - 5 values
- *Implement (decision support) in select areas
- *Complete new CEAs

2016 - 2017

Transition

- *Leadership and Program Management
- *Communication & Engagement
- *Guidance & procedures
- *Organizational alignment and resourcing
- *Application “roll out” and training
- *Evaluation

2017 – 2020

Province-Wide Implementation

- *Operational Guidance by Sector
- *New values / protocols
- *CE Management & Decision support
- *Continuous improvement



New – Focused
Transition Phase

Cumulative Effects Framework



- The Cumulative Effects Framework (CEF) includes policy, procedure and decision-support tools to improve the management of CE in BC.
- The CEF **enhances** existing approaches to managing multiple values.
- The CEF ensures that **information** is considered **consistently** to avoid unintended consequences.





Northeast Cumulative Effects Program

Purpose:

To establish a coordinated, multi-sector approach to assessing and managing cumulative effects across BC's Northeast Region

- Regional implementation of the Provincial Cumulative Effects Framework (CEF)
- Builds on the existing approach to managing multiple values on the land base
- Supports consideration of impacts to Aboriginal & Treaty rights and interests

Northeast CE Program Activities

- Regional review of Provincial CEF products
- Building coordination and consistency
- Building internal capacity to implement CEF
- ESI LNG RSEA



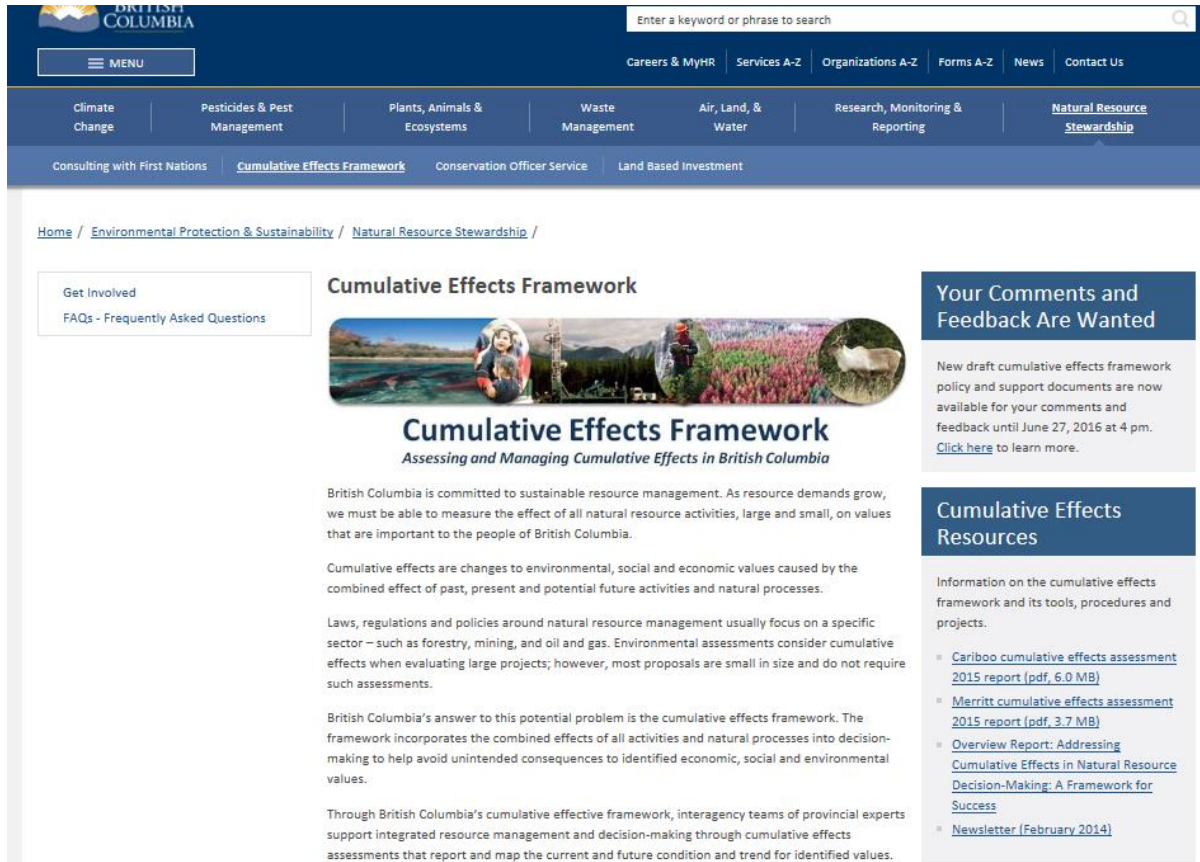


Linkages

- Agreements with First Nations
- Other cumulative effects assessment initiatives
- Stewardship initiatives
- Authorization initiatives



For More Information:



The screenshot shows the British Columbia website interface. At the top is the BC logo and a search bar. Below is a navigation menu with categories like 'Climate Change', 'Pesticides & Pest Management', 'Plants, Animals & Ecosystems', 'Waste Management', 'Air, Land, & Water', 'Research, Monitoring & Reporting', and 'Natural Resource Stewardship'. The main content area features a breadcrumb trail: 'Home / Environmental Protection & Sustainability / Natural Resource Stewardship /'. A sidebar on the left has 'Get Involved' and 'FAQs - Frequently Asked Questions'. The main heading is 'Cumulative Effects Framework' with a sub-heading 'Assessing and Managing Cumulative Effects in British Columbia'. Below this is a large image showing a person in a boat, a person in a field, and a sheep. The text describes the province's commitment to sustainable resource management and the need for a cumulative effects framework. It explains that cumulative effects are changes to environmental, social, and economic values caused by the combined effect of past, present, and potential future activities and natural processes. It notes that laws, regulations, and policies around natural resource management usually focus on a specific sector, but environmental assessments consider cumulative effects when evaluating large projects. The framework is described as the province's answer to this problem, incorporating the combined effects of all activities and natural processes into decision-making to help avoid unintended consequences. Finally, it states that through the cumulative effects framework, interagency teams of provincial experts support integrated resource management and decision-making through cumulative effects assessments that report and map the current and future condition and trend for identified values.

Website:

www2.gov.bc.ca

- search cumulative effects
- search natural resource permitting project

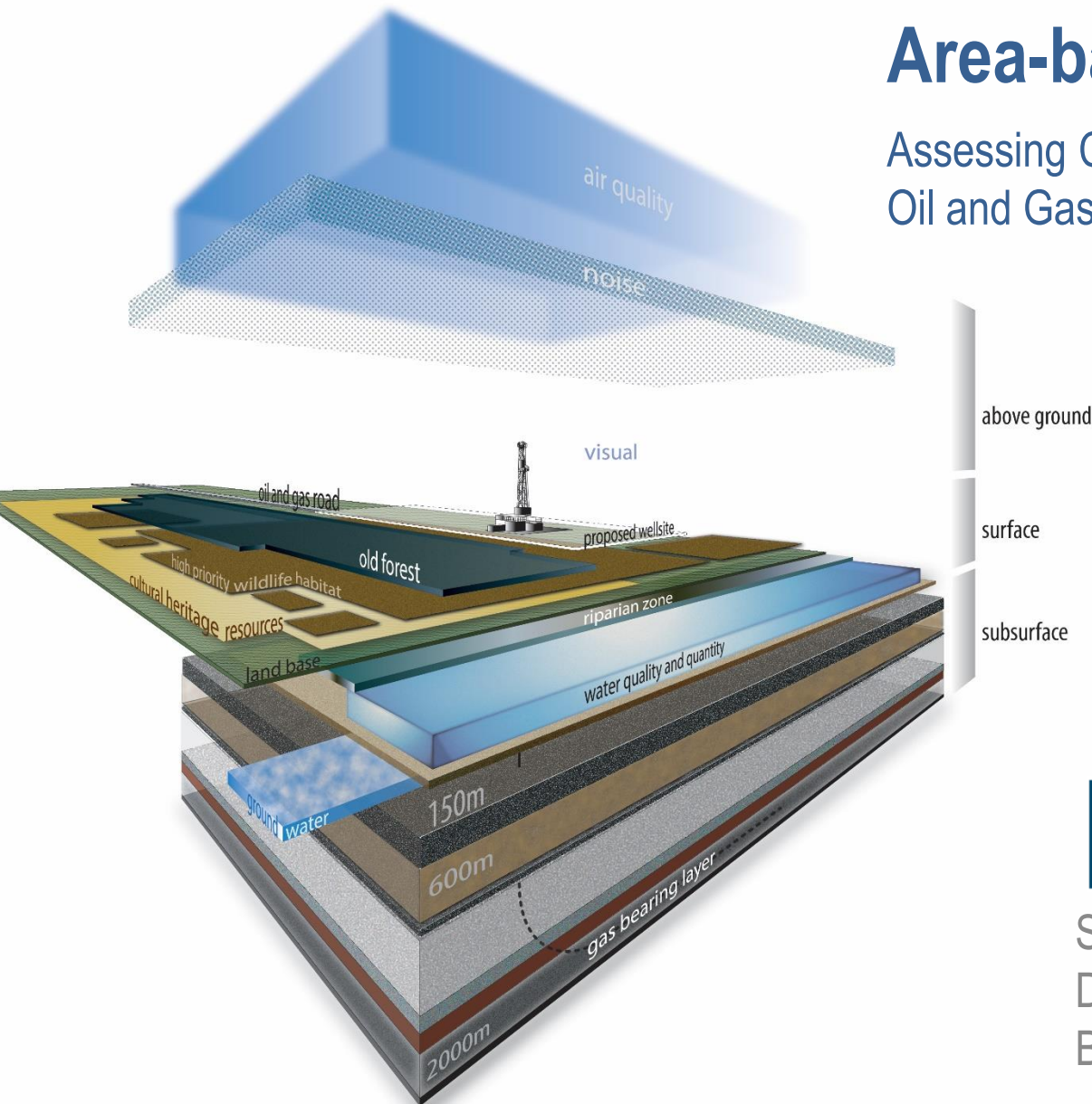
Email:

cumulativeeffects@gov.bc.ca



Area-based Analysis

Assessing Cumulative Impacts of Oil and Gas Applications



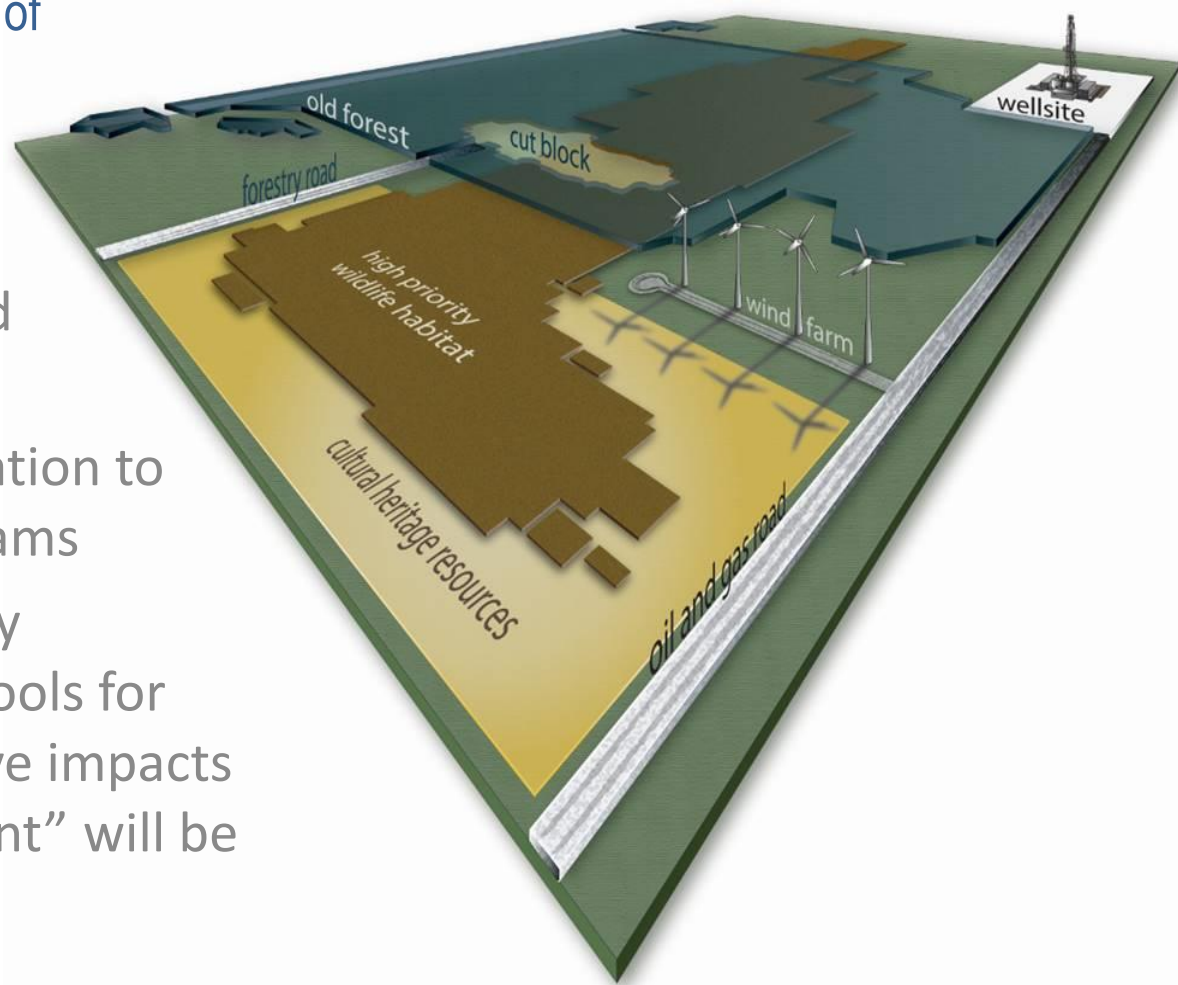
Sean Curry
Director, Stewardship
BC Oil and Gas Commission

Area-based Analysis

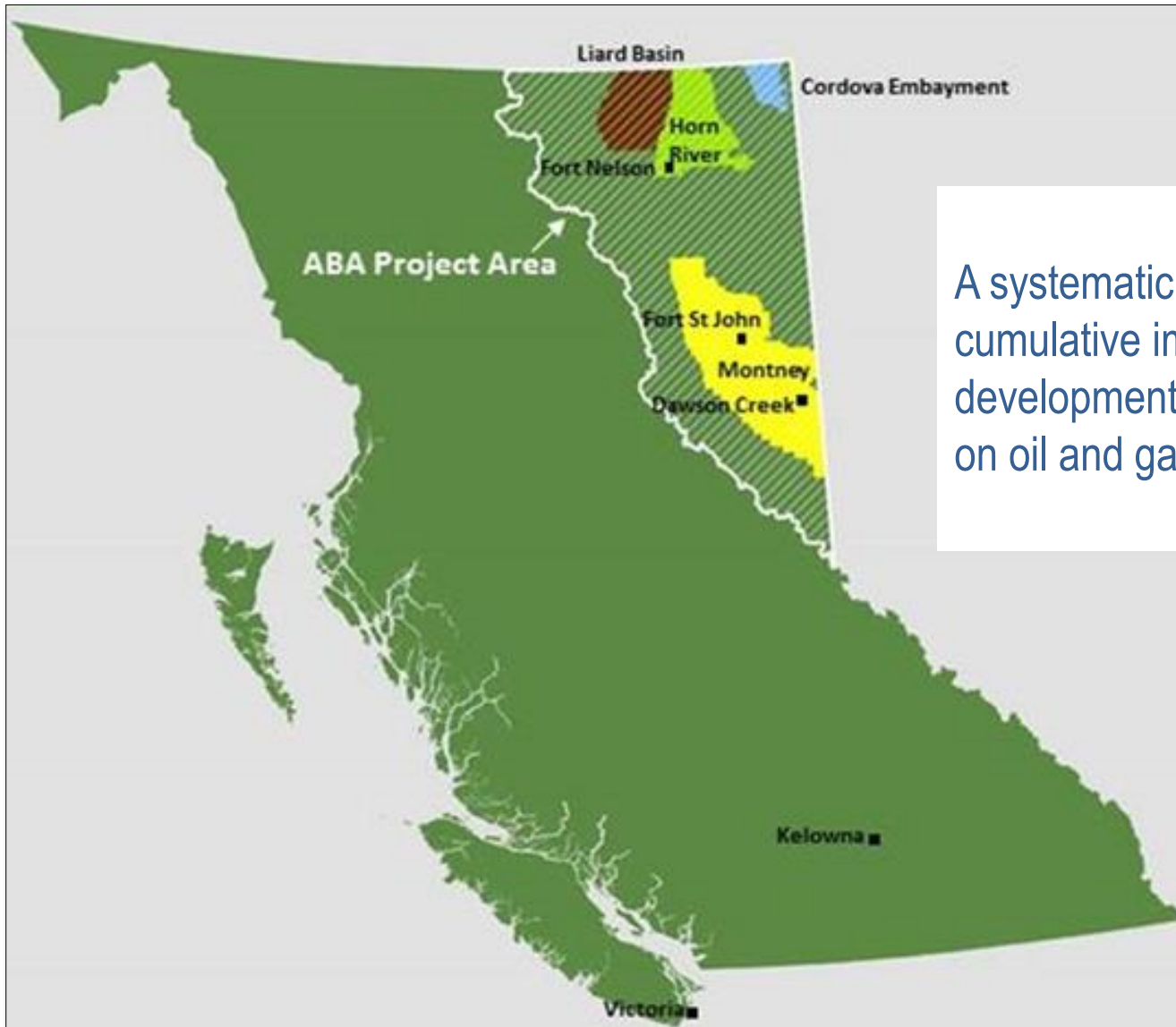
Assessing Cumulative Impacts of Oil and Gas Applications

Accomplish three things:

1. Overview of Area Based Analysis (ABA).
2. Perspective: ABA in relation to the Provincial CE Programs
3. Challenge CIRC to clarify where/how the “new tools for assessing the cumulative impacts of resource development” will be used to affect change.



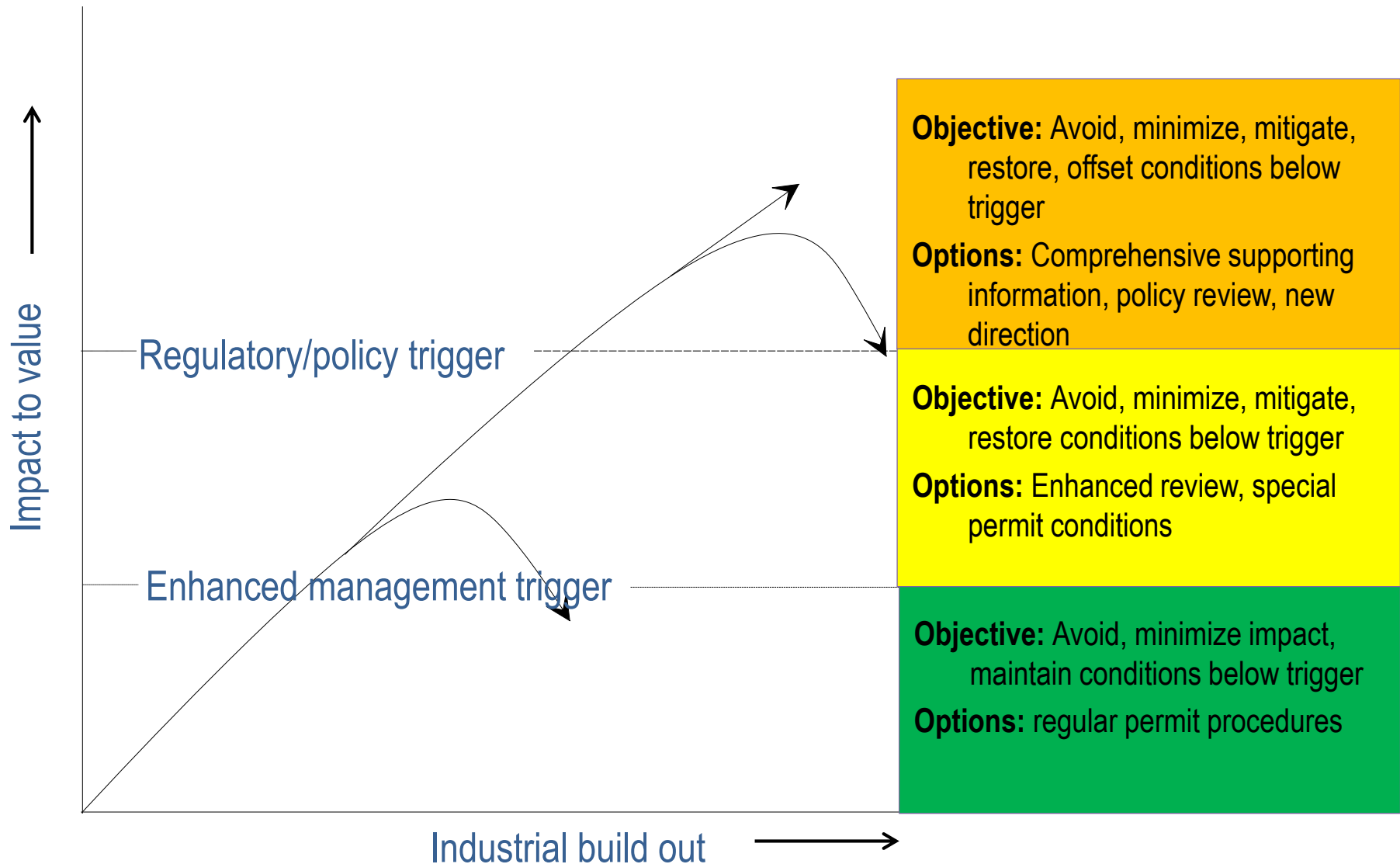
What is Area-based Analysis



A systematic method of analyzing the cumulative impacts of all industrial development when making decisions on oil and gas applications.

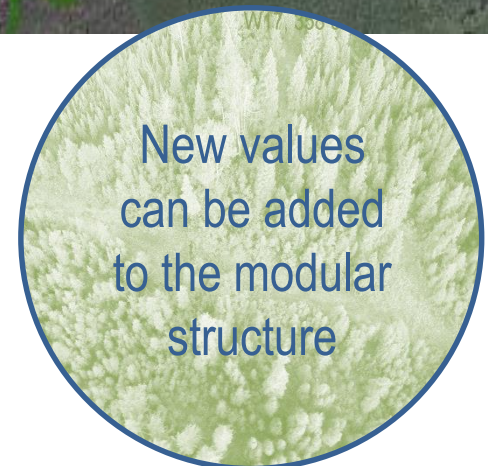
Area-based Analysis

Decision making framework



Area-based Analysis

Decision support tool enhances application review process



Current and Proposed Values

LAND

WATER

AIR



Old forests
Riparian habitat
Wildlife
Cultural heritage

Water quantity
Water quality
Ground water

Air quality

Area-based Analysis

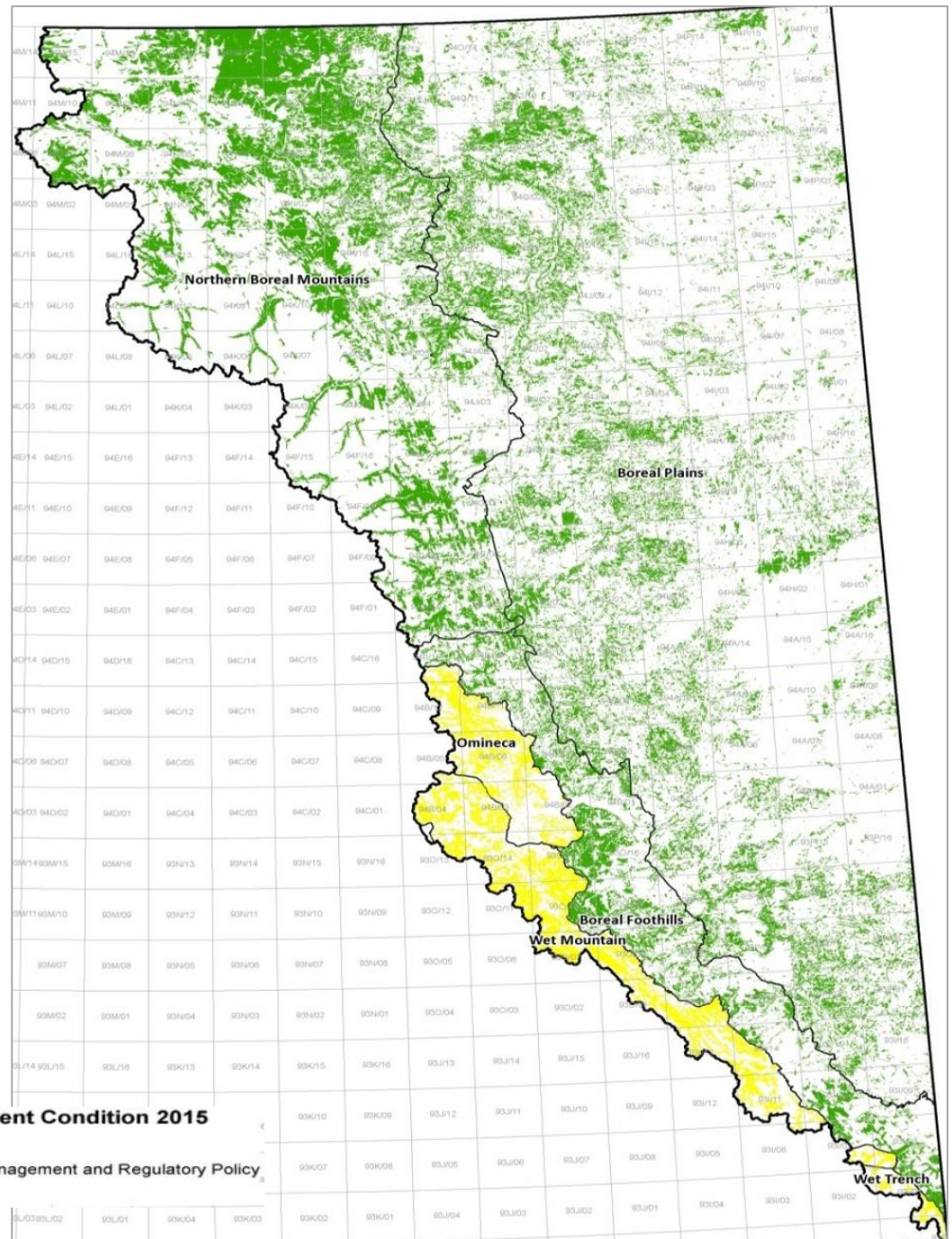


Old Forest Values

Old Forest Current Condition 2015

ABA_STATUS

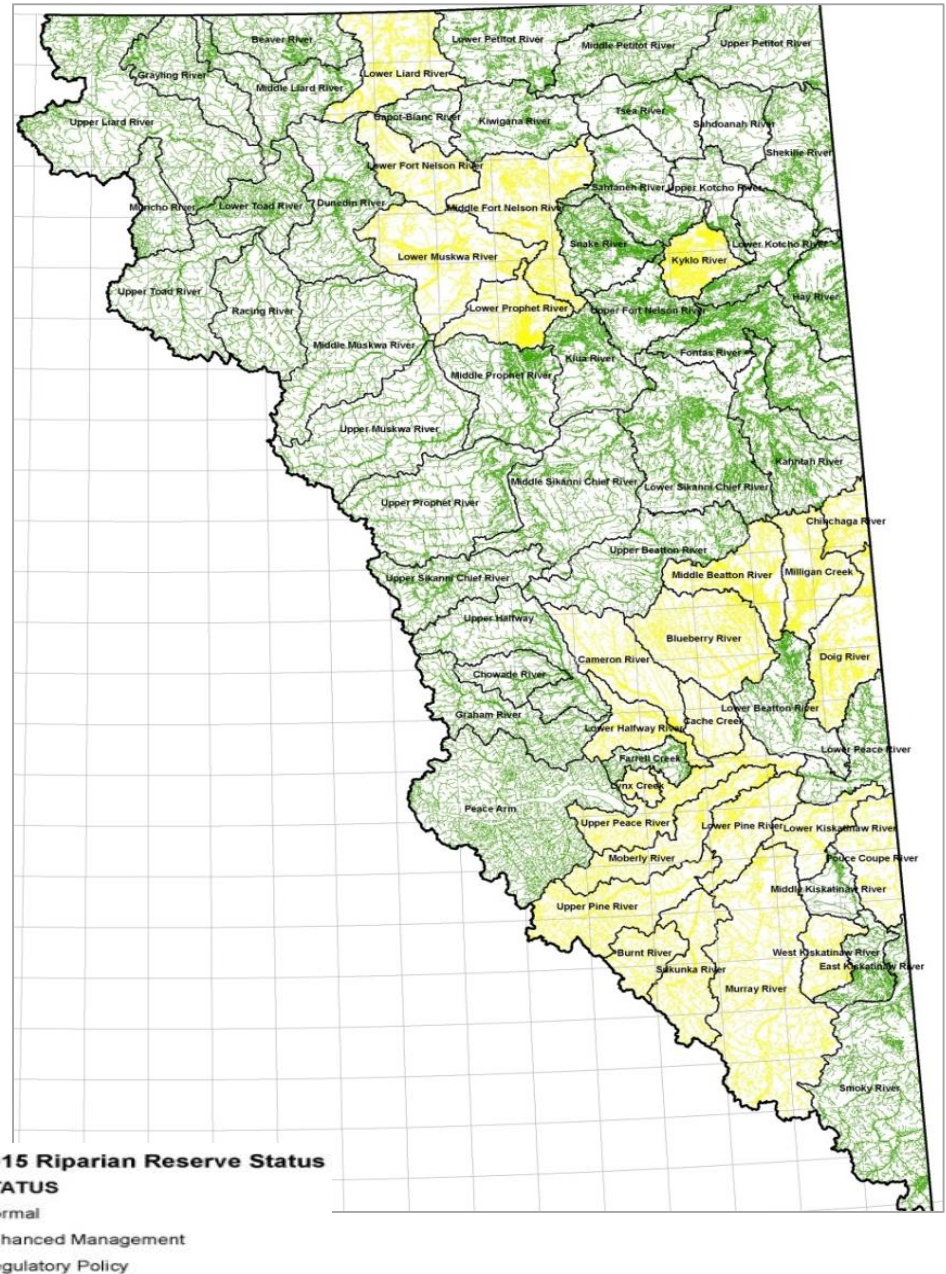
-  Enhanced Management and Regulatory Policy
-  Normal



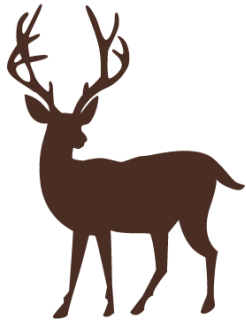
Area-based Analysis



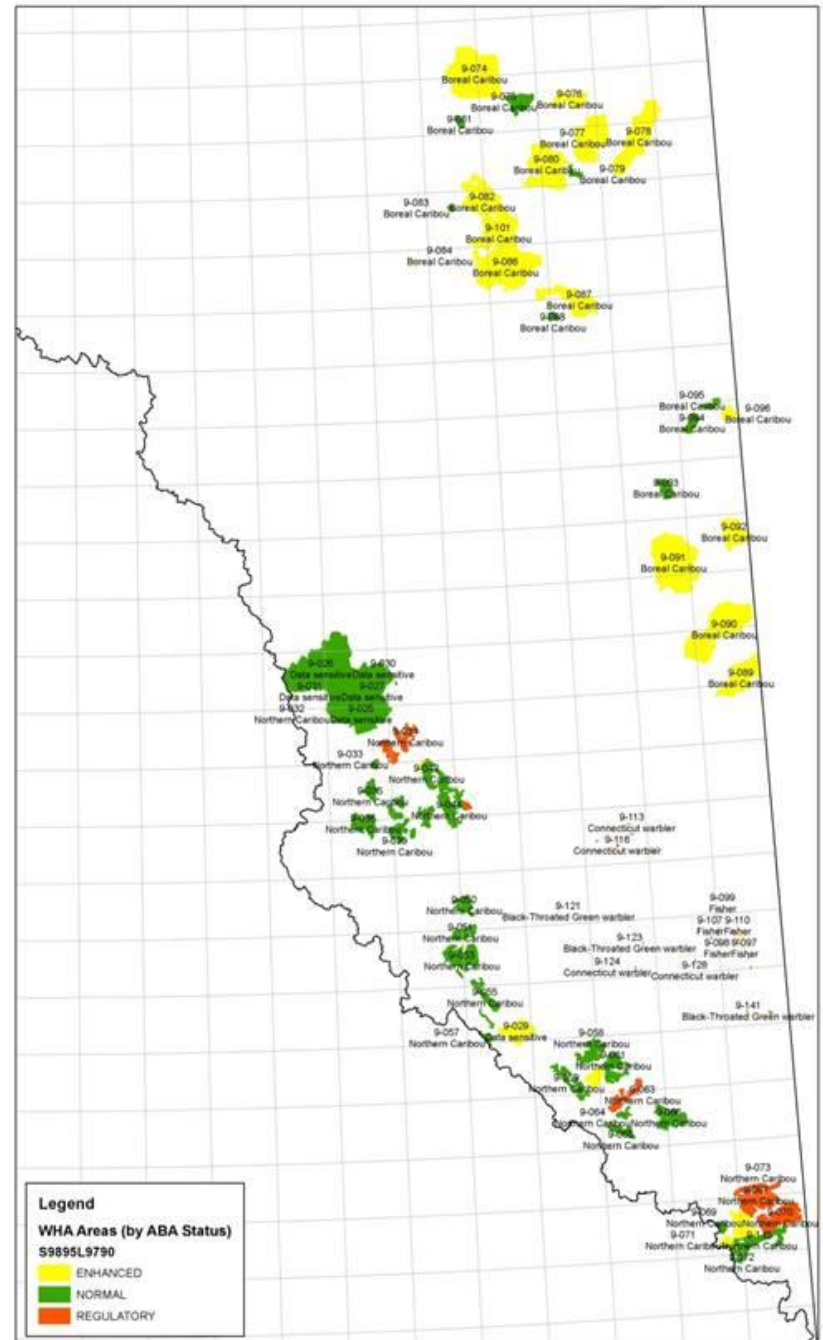
Riparian Value



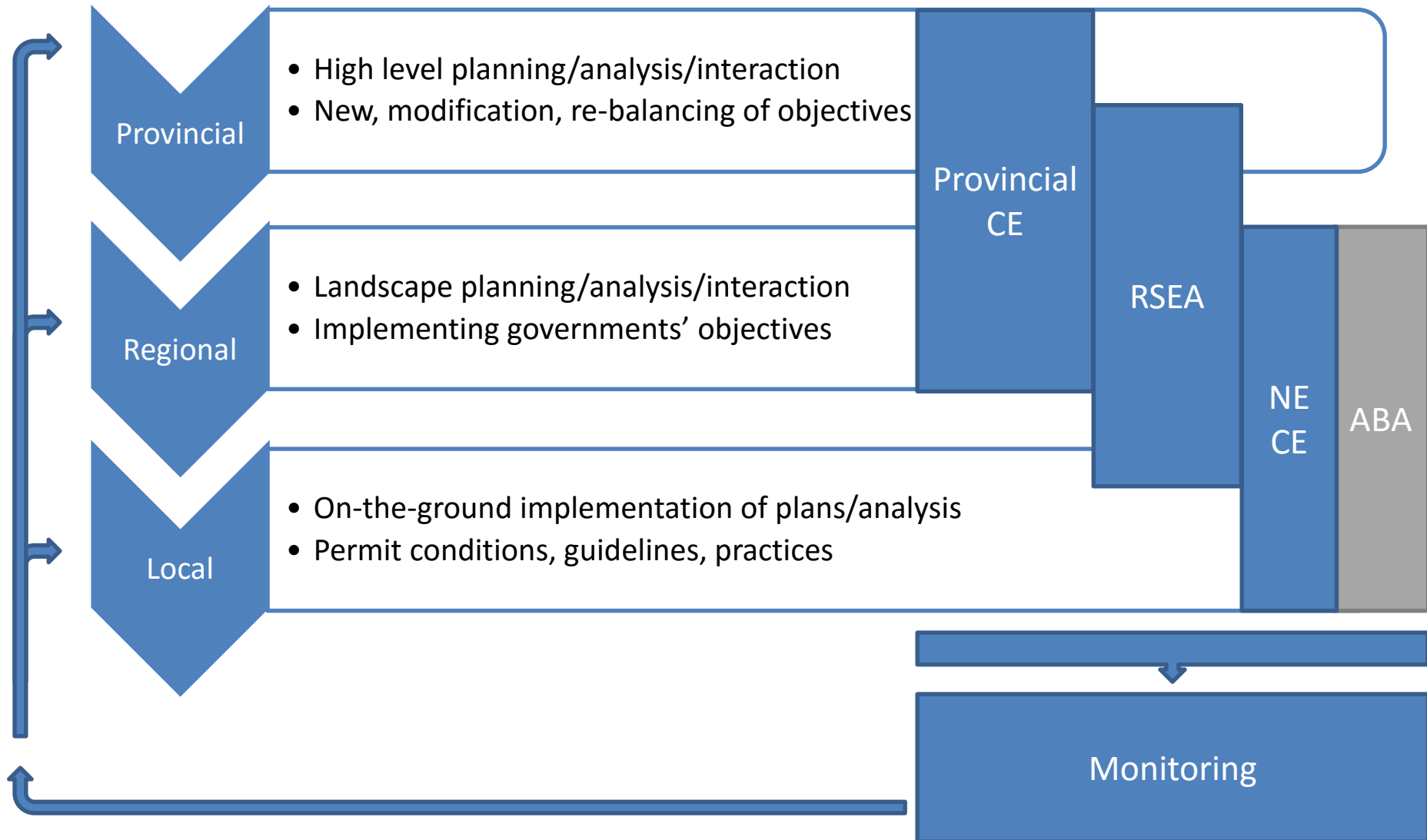
Area-based Analysis



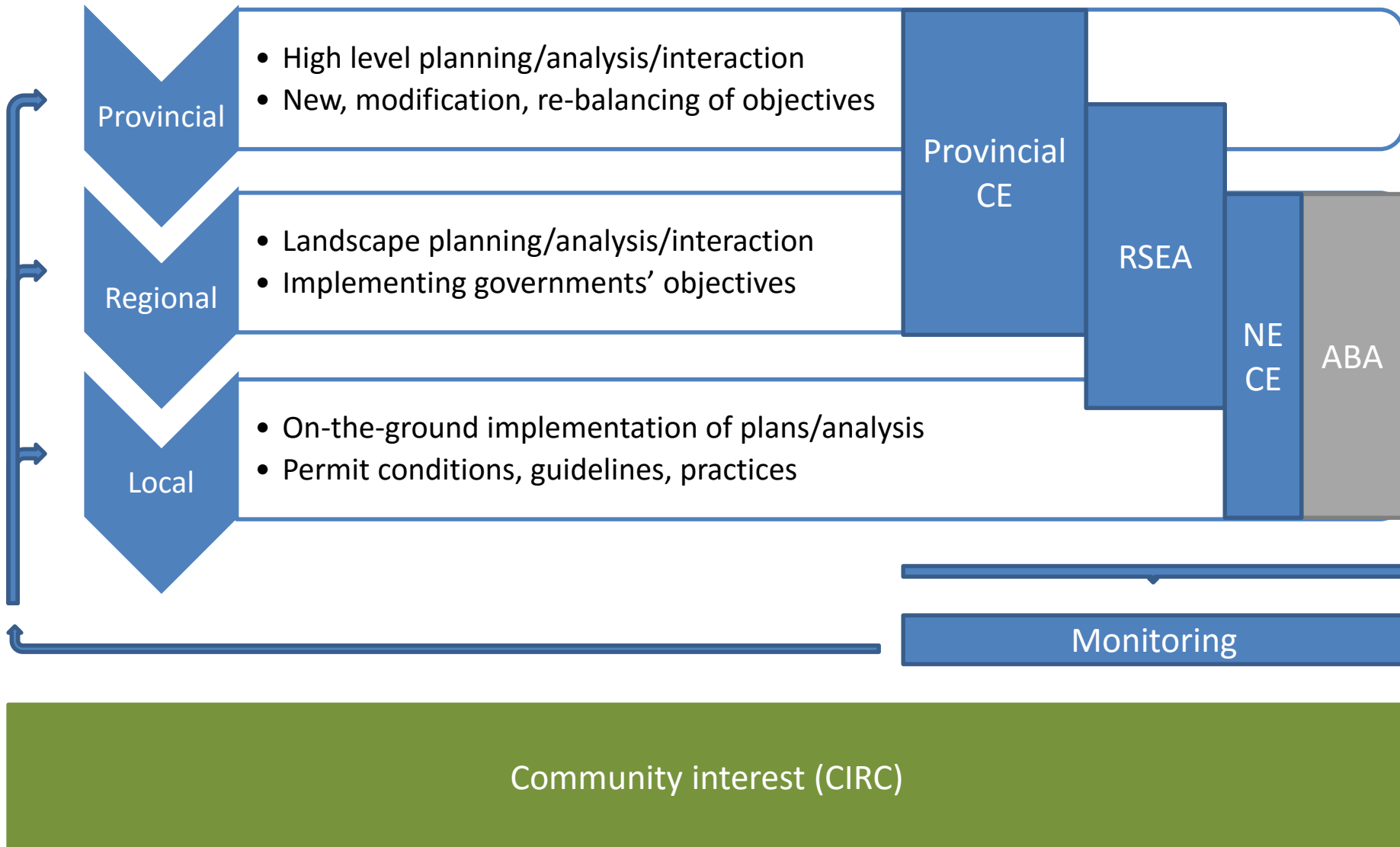
Designated Wildlife Value Stage 1



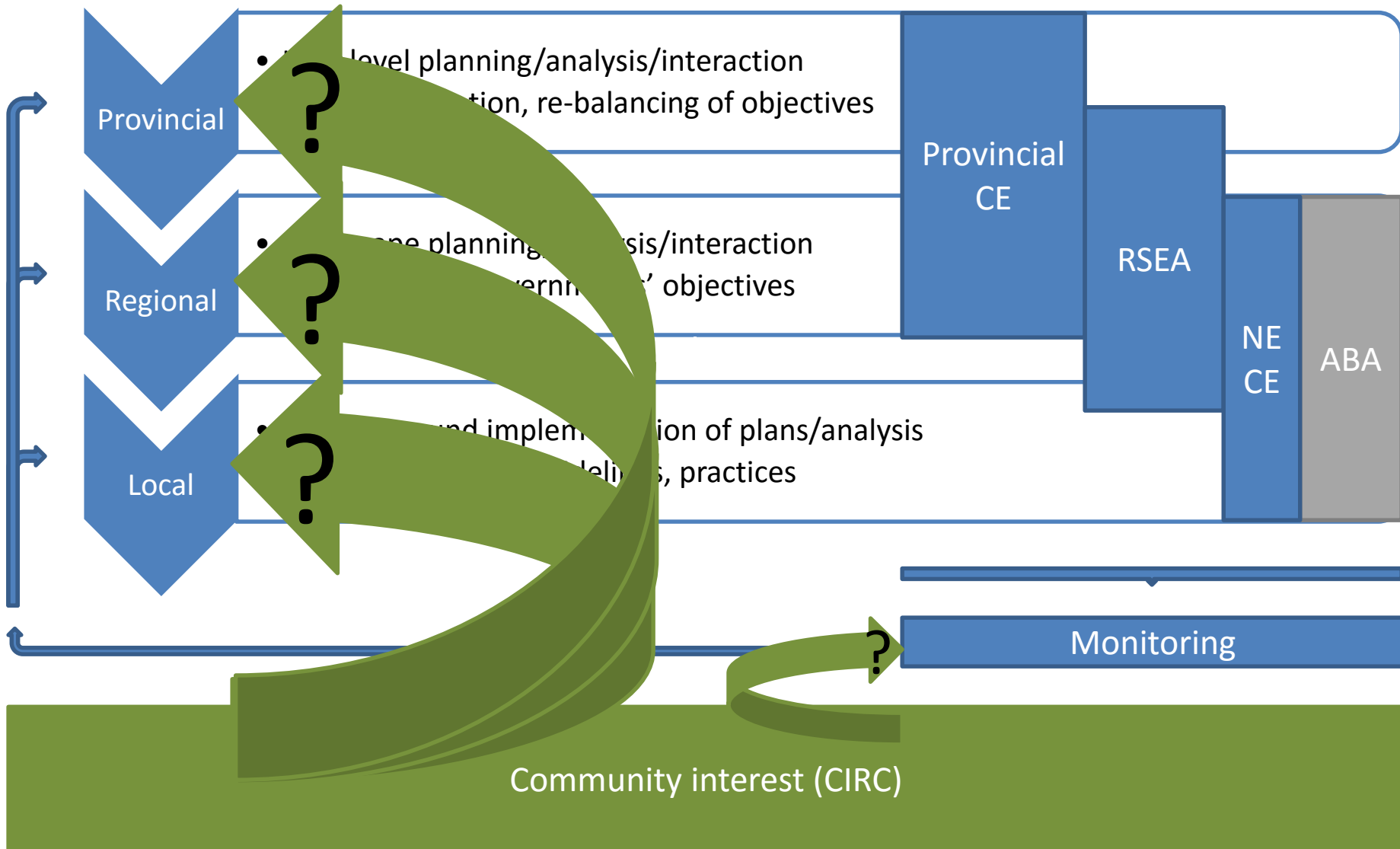
How does ABA fit with Provincial CE programs?



Where/how does CIRC fit with Provincial CE programs?

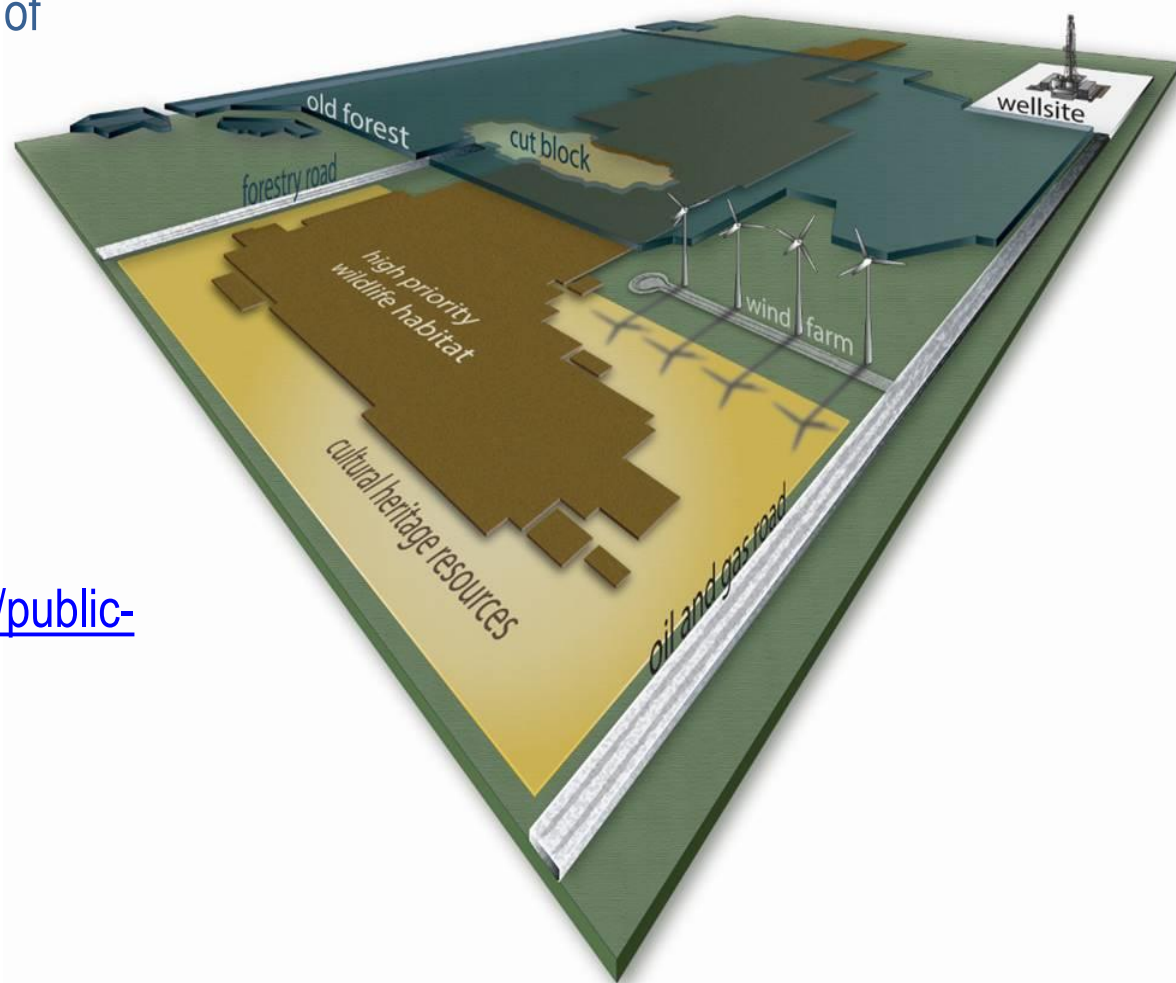


Where/how does CIRC fit with Provincial CE programs?



Area-based Analysis

Assessing Cumulative Impacts of
Oil and Gas Applications



Questions

More Info: <http://www.bcogc.ca/public-zone/area-based-analysis-aba>

Sean Curry
Director, Stewardship
BC Oil and Gas Commission
Sean.curry@bcogc.ca



Regional Strategic Environmental Assessment

Fort St John: November 29, 2016

Hannah Askew, Staff Counsel
West Coast Environmental Law



Why a Strategic Regional Approach?

- Wide ranging species & interconnected values
- Large-scale linear developments
- Cumulative effects
- Increase effectiveness/efficiency re: project specific and operational decisions
- Risks to values we care about if we don't look at the "big picture"

Root Causes?

- Canadian laws are focused on extraction of specific resources (a 'siloed' approach)
- Assessment is reactive, project and proponent driven
- Historical denial of Aboriginal and Treaty rights = legacy of tenures and approvals granted on First Nations' territories without consultation or consent

Focusing in Values

Cumulative effects management mean turning this approach on its head –*placing the focus of assessment and management on the needs of the land, water and people themselves* –rather than the resources to be extracted (timber, gas etc).



?



**EVALUATE CUMULATIVE EFFECTS OF
DIFFERENT DEVELOPMENT SCENARIOS**



Photo: Chris Thevarge

The Dialogue Sessions



Our report:

Regional Strategic
Environmental
Assessment for
Northern BC: The Case
and Opportunity

Photo: Andy Wright



GOVERNMENT-TO-GOVERNMENT NEGOTIATIONS/DECISION-MAKING

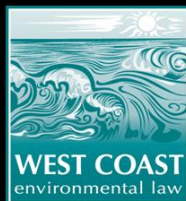
West Coast Environmental Law





Photo: Marie Barney

INDIGENOUS LAW BASED CUMULATIVE EFFECTS MANAGEMENT



Regional Environmental Assessment

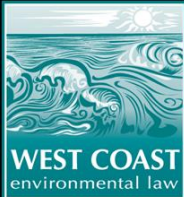
What could it look like?

- 1) Broad-based conversation to identify values & potential range of development scenarios
- 2) Analyze impacts of different development scenarios on key values using best available scientific information, Indigenous & local knowledge
- 3) Public dialogue/hearing process: Which scenario(s) would make the greatest mutually reinforcing contribution to 'sustainability'?
- 4) Government-to-government negotiations



Photo: Brian Huntington

THANK YOU



Questions and Discussion



CIRC

The Cumulative Impacts
Research Consortium

UNBC UNIVERSITY OF
NORTHERN BRITISH COLUMBIA

Refreshment Break



CIRC

The Cumulative Impacts
Research Consortium

UNBC UNIVERSITY OF
NORTHERN BRITISH COLUMBIA

Agenda

- 1:00 – 1:15 *Welcome and Orientation to the Cumulative Impacts Research Consortium (CIRC)*
- 1:15 – 2:30 *Perspectives on Cumulative Impacts Monitoring and Assessment*
- 2:30 – 2:45 *Break*
- 2:45 – 4:15 ***Roundtable Discussions***
- 4:15 – 4:30 *Evaluation, Closing Remarks*

Roundtable Discussions

OBJECTIVE: The purpose of this activity is to generate conversation around locally-important values.

Questions for Discussion

- What do you value in the Peace River Region?
 - What do the elements of a healthy environment, community and person look like to you?
 - What do we need to make sure those elements are preserved/protected moving forward?

Values Activity

OBJECTIVE: To move through a guided process to think through the challenges associated with decision-making processes around the protection and preservation of those values.

What TWO values are most important to your table? Why?

Report Back and Debrief

Key themes and insights:

- What values (if any) did your group prioritize and why?
- What was the process of prioritization like for your group?

Closing Discussion

- How can these conversations inform future actions?
- How can we do this kind of work better, together? How can the CIRC best support on the ground capacity related to the issue of cumulative impacts?

Thank you!



www.unbc.ca/cumulative-impacts

cumulativeimpactslivinglibrary.ca

madeline.wilson@unbc.ca | chris.buse@unbc.ca

CIRC

The Cumulative Impacts
Research Consortium

UNBC UNIVERSITY OF
NORTHERN BRITISH COLUMBIA