

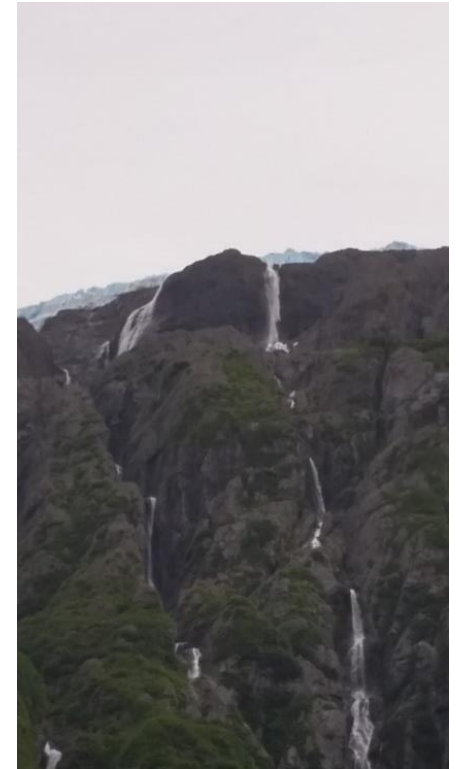
# Towards a Holistic, Integrated Approach: An Update from the Cumulative Impacts Research Consortium (CIRC)



**Chris Buse, PhD**  
CIRC Project Lead  
Postdoctoral Fellow  
University of Northern British Columbia

**Cumulative Effects and the Future of  
Natural Resource Management**

**March 2, 2016**



**CIRC**

The Cumulative Impacts  
Research Consortium

**UNBC** UNIVERSITY OF  
NORTHERN BRITISH COLUMBIA

# The 10 000ft View

- Cumulative impacts and cumulative effects...What's in a word?
- Why this focus now?
- Who are we and what is the CIRC?
  - Community Engagement
  - Research
- Future directions for CEA

# What's in a word? Cumulative 'effects'

“Cumulative effects are changes to the environment that are caused by an action in combination with other past, present and future human actions.” – CEAA 2014

“Cumulative effects are changes to social, economic and environment conditions caused by the combined impact of past, present and potential human activities or natural events.” – BC CEF 2015



# Challenges for Cumulative Effects Assessment

- Narrow understanding of effects
  - Primarily associated with environmental change and ‘valued ecosystem components’
  - Largely proponent driven through EA process (at least in BC)
- Limited spatial and temporal scale of assessment protocol
  - CEA primarily limited to project footprint
  - ‘Baseline’ may already be affected by influenced by other developments
  - Lack of clarity around enforcement and requirement for long-term monitoring/mitigation

# (Cumulative) 'Impacts' vs. 'Effects'

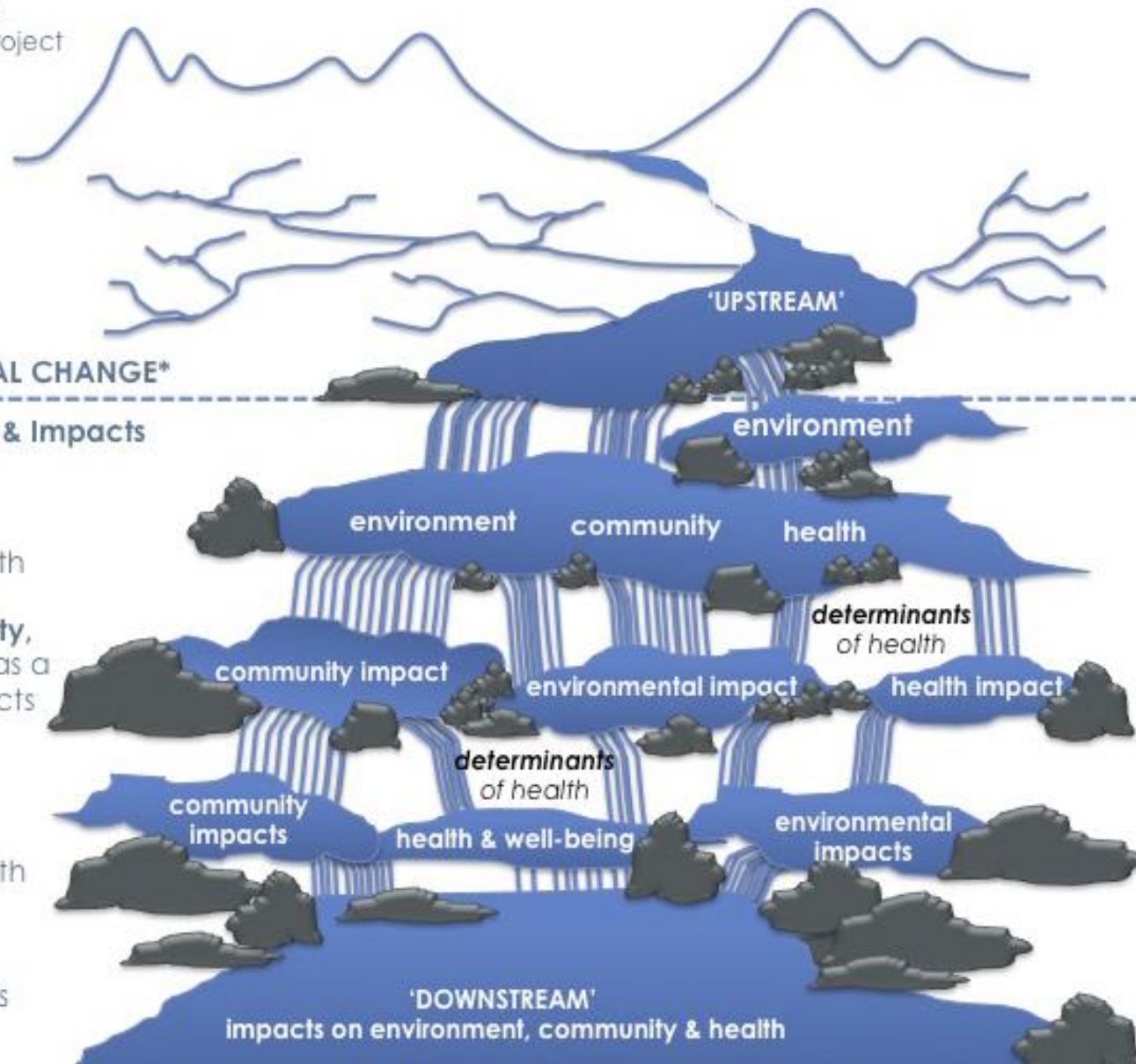
- 'Impacts' = longer term consequences that flow from an effect or effects
  - The effects of effects
- 'Cumulative impacts' may occur when resource development is imposed on past land use and development activities in ways that leave lasting consequences for people, their communities, and the broader physical environment



\*Proposed or Actual Change could involve a policy or a project

P  
A  
S  
T

'Upstream' drivers of change in a region/landscape of concern



F  
U  
T  
U  
R  
E

**Long-term, indirect**  
'downstream' impacts

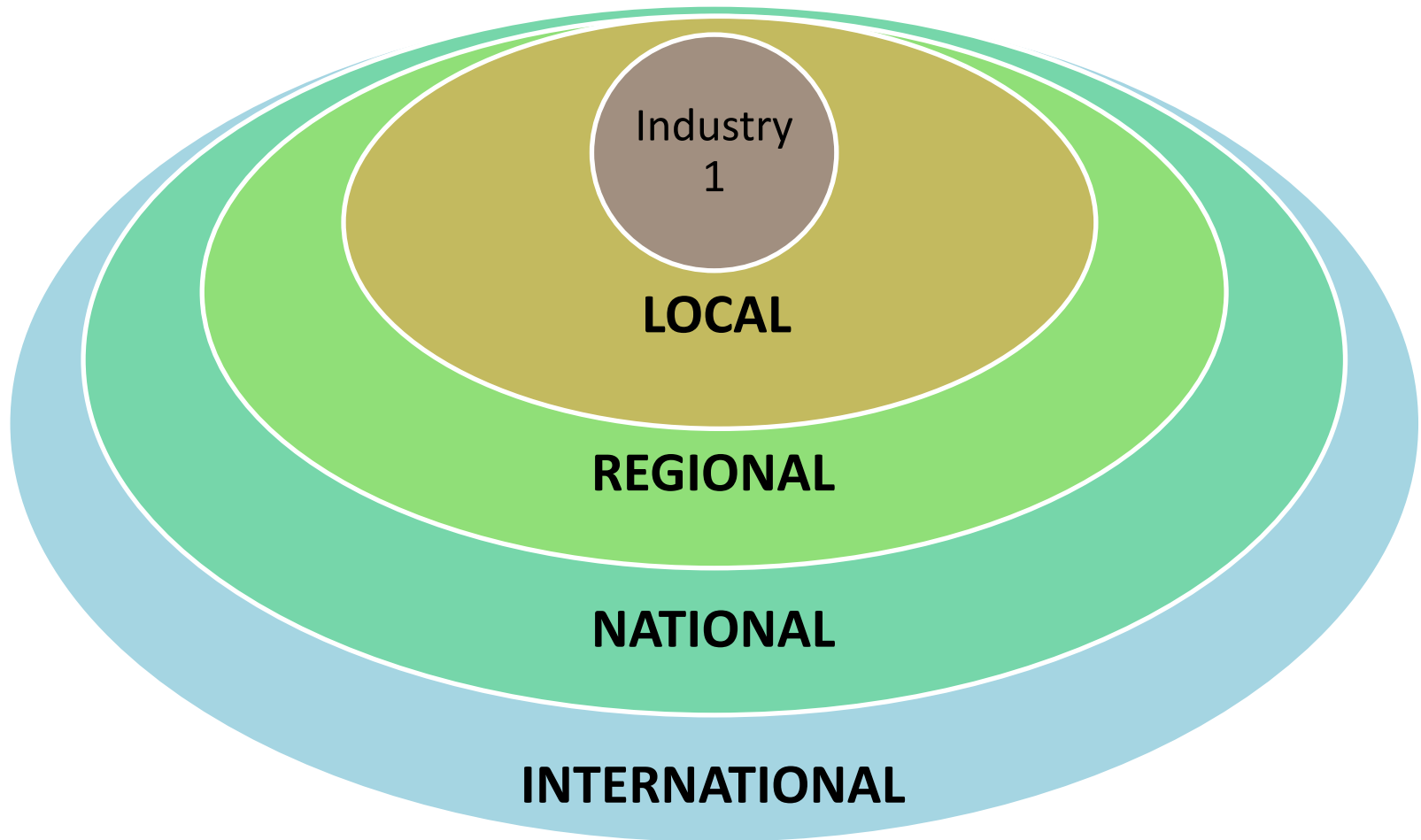
# 'Integration Imperative': Business as Usual



Industry  
1

→ Effect OR Ci

# 'Integration Imperative': Integrated Scale



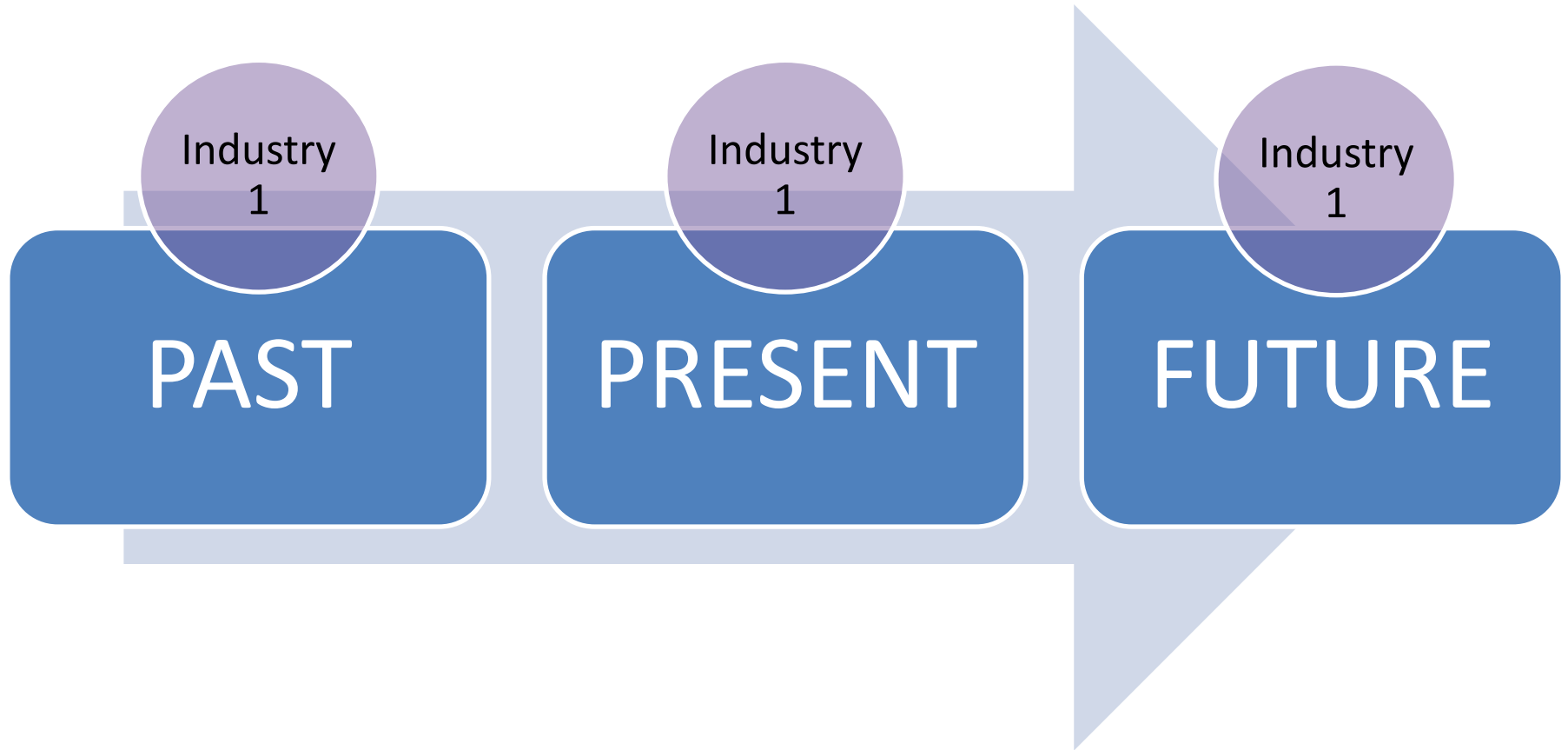
CIRC

The Cumulative Impacts  
Research Consortium

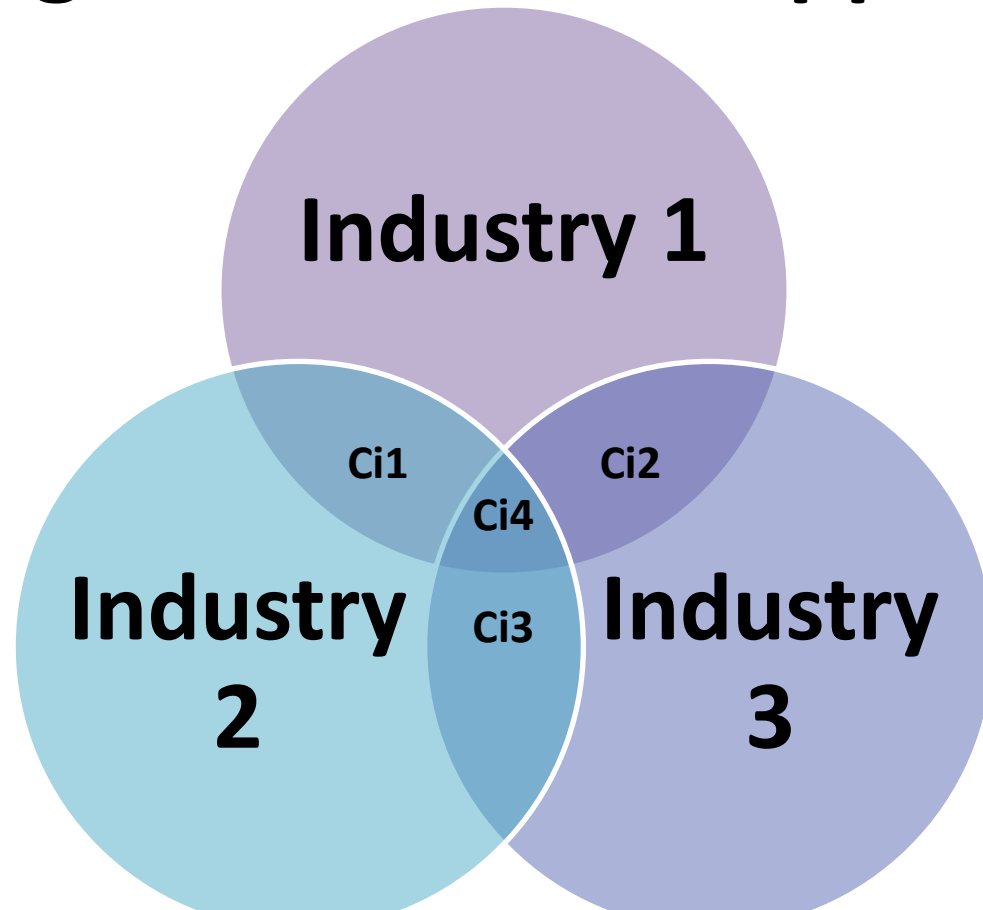
**UNBC** UNIVERSITY OF  
NORTHERN BRITISH COLUMBIA



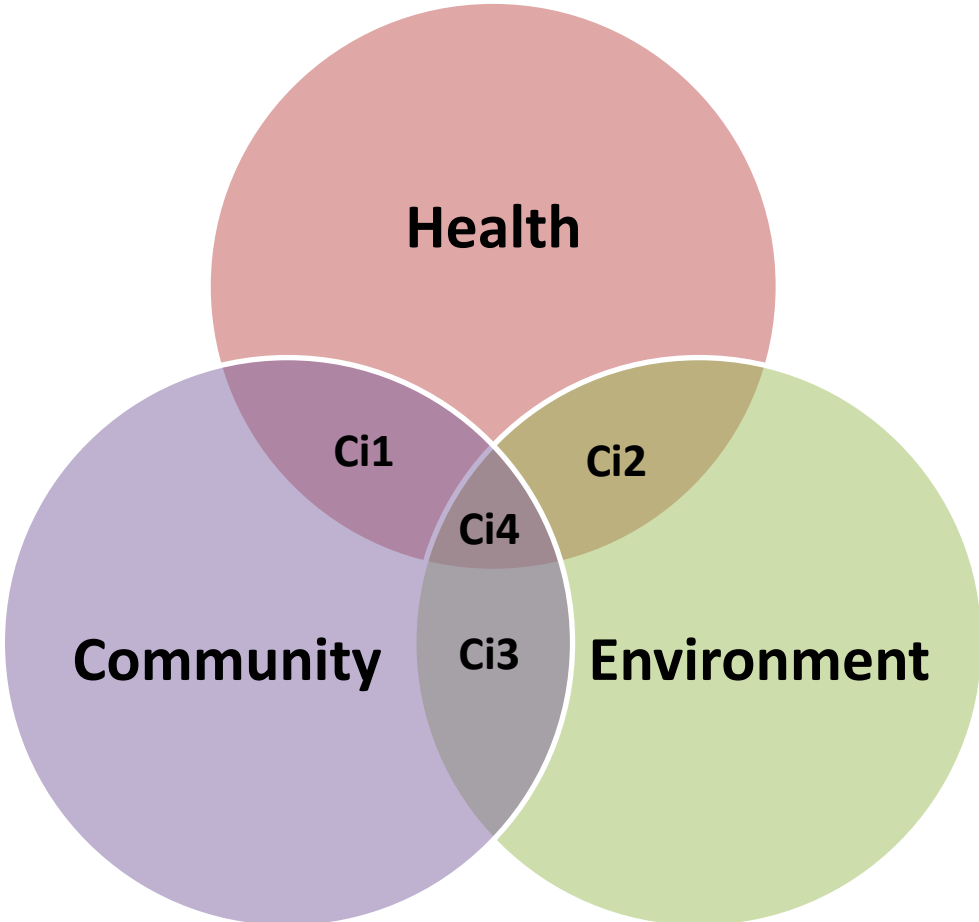
# 'Integration Imperative': Temporal Integration



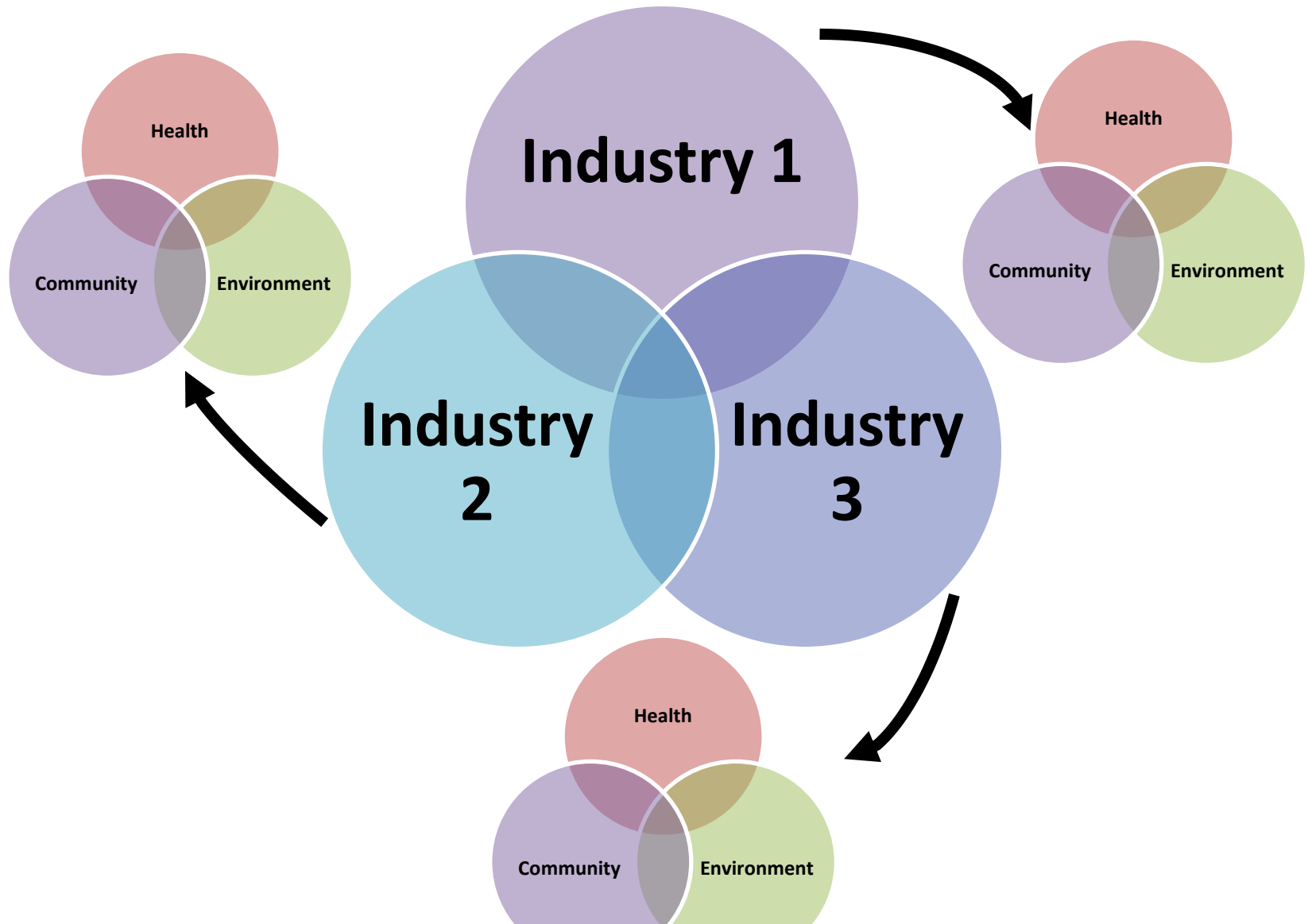
# The 'Integration Imperative': Integrated Sectoral Approach



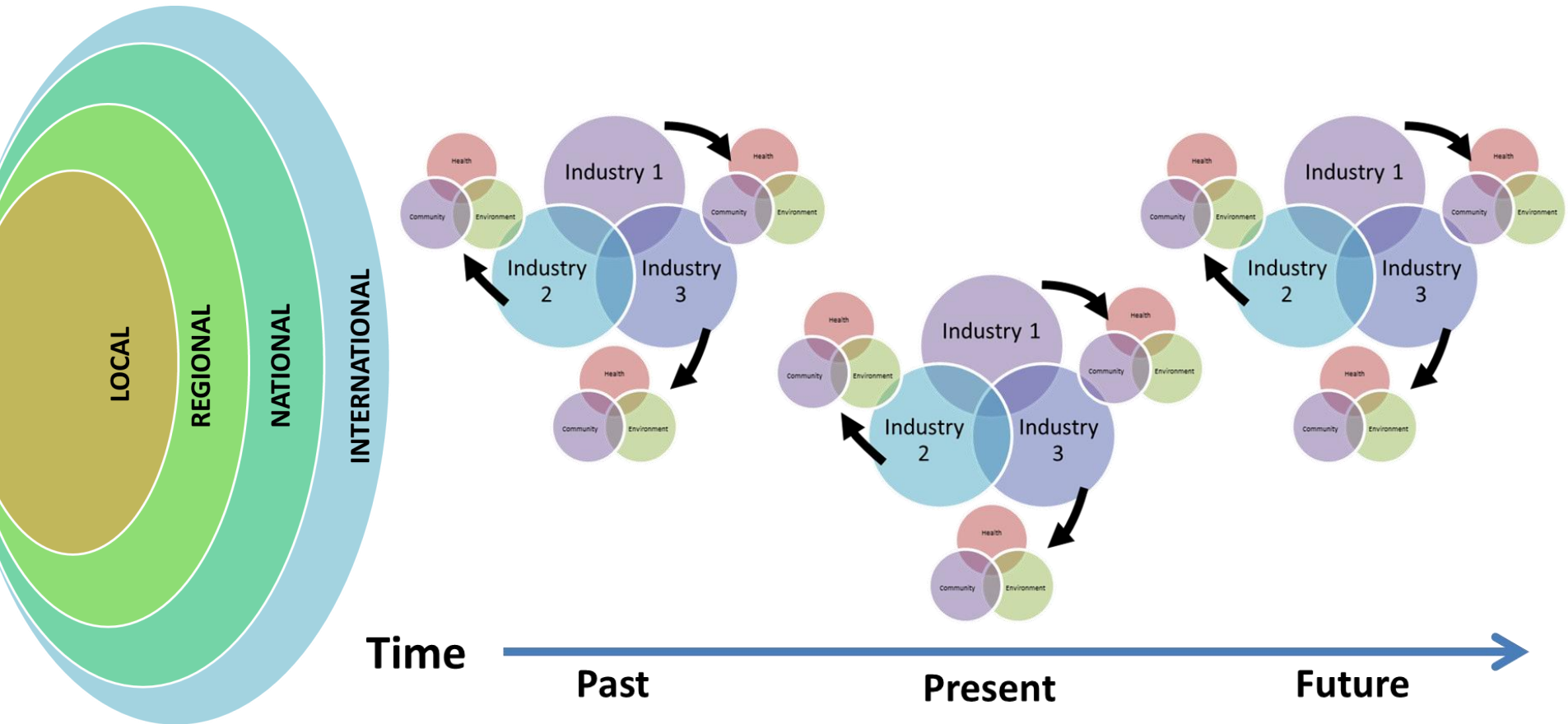
# 'Integration Imperative': Integrated Values



# The 'Integration Imperative'



# The 'Integration Imperative'





# Why this focus and why now?

Fig 1. Expansion of oil and gas wells in the Peace

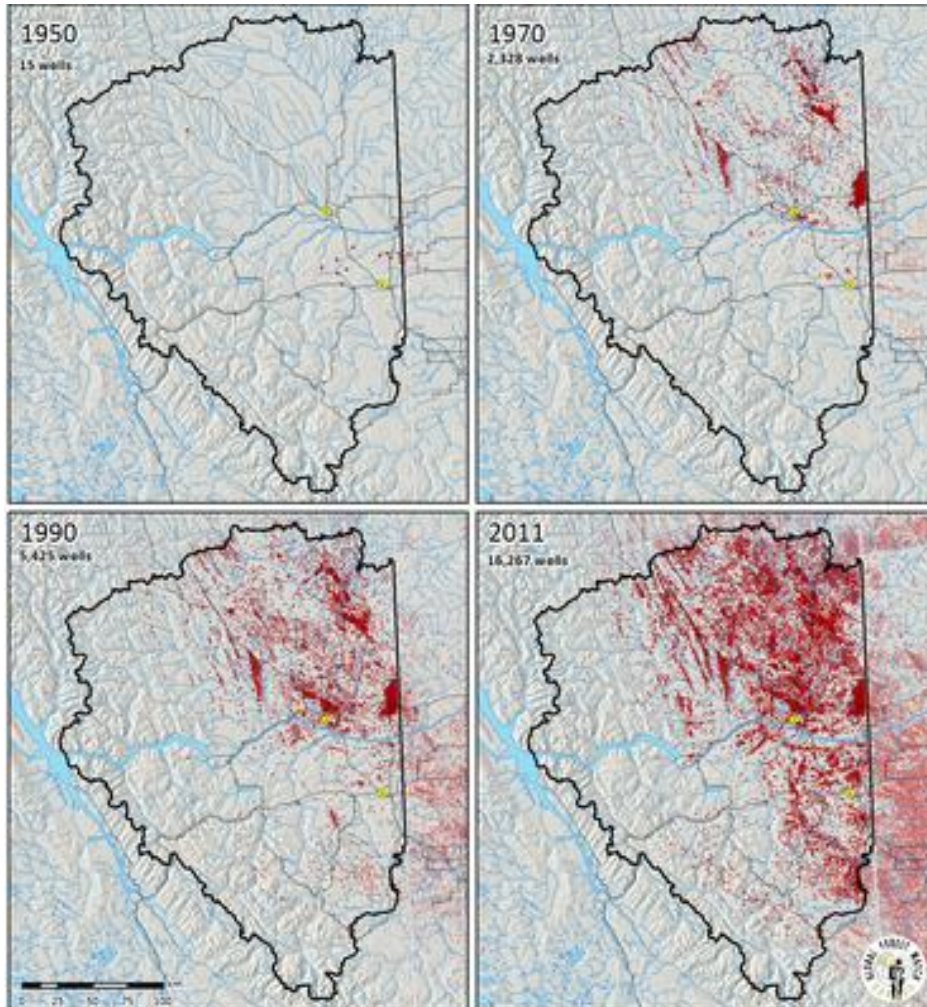


Fig 2. Cumulative Change in the Peace

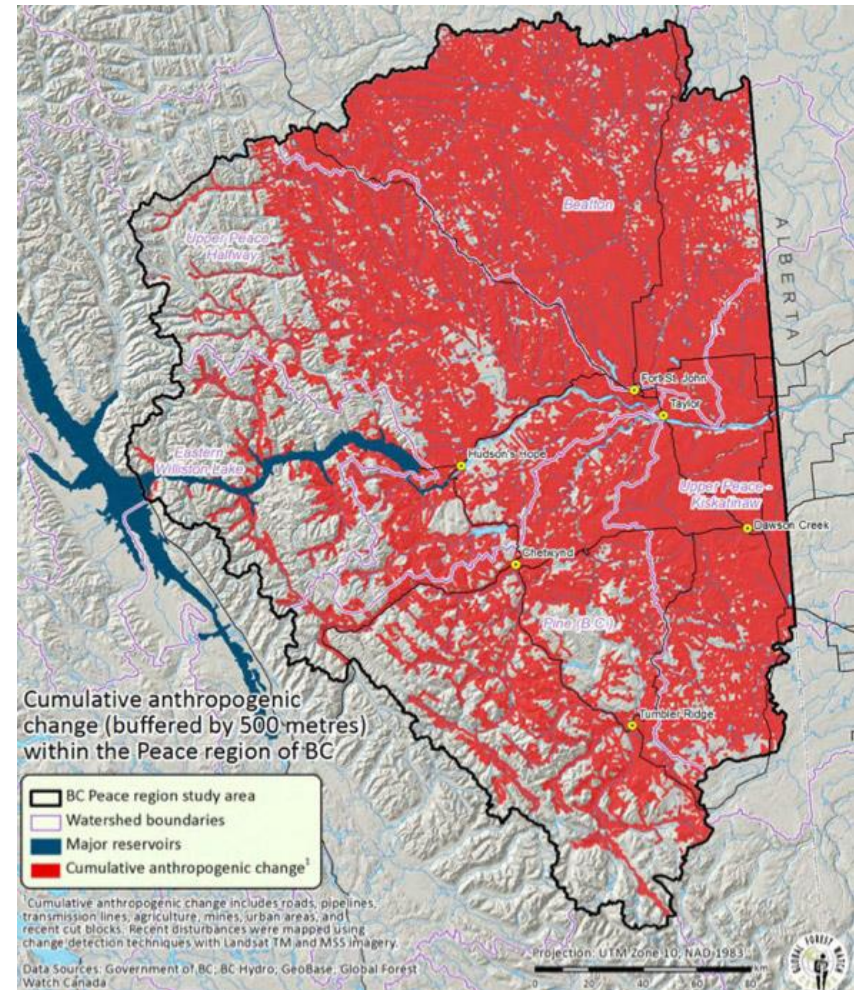
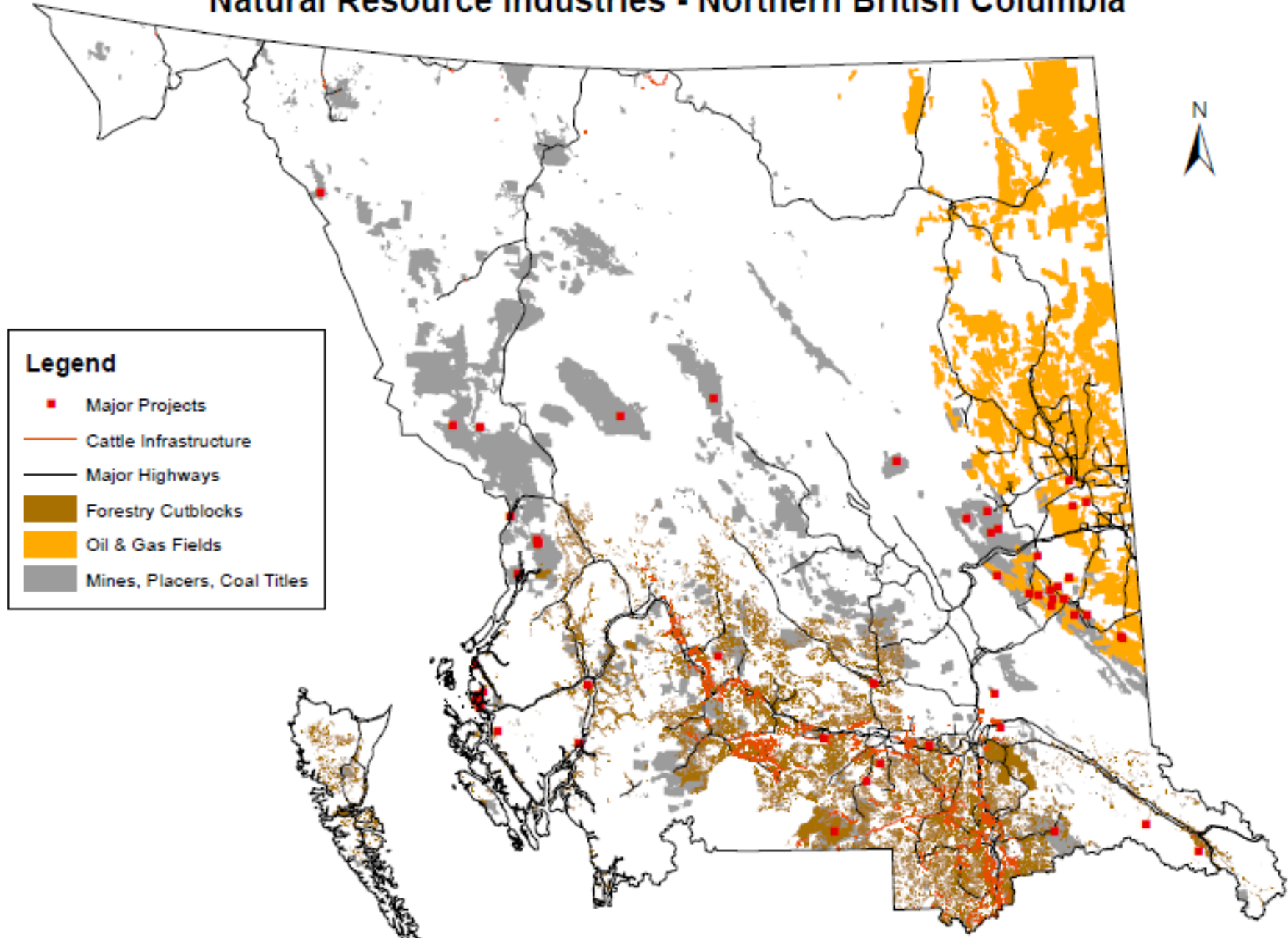


Figure credits: Global Forest Watch 2011



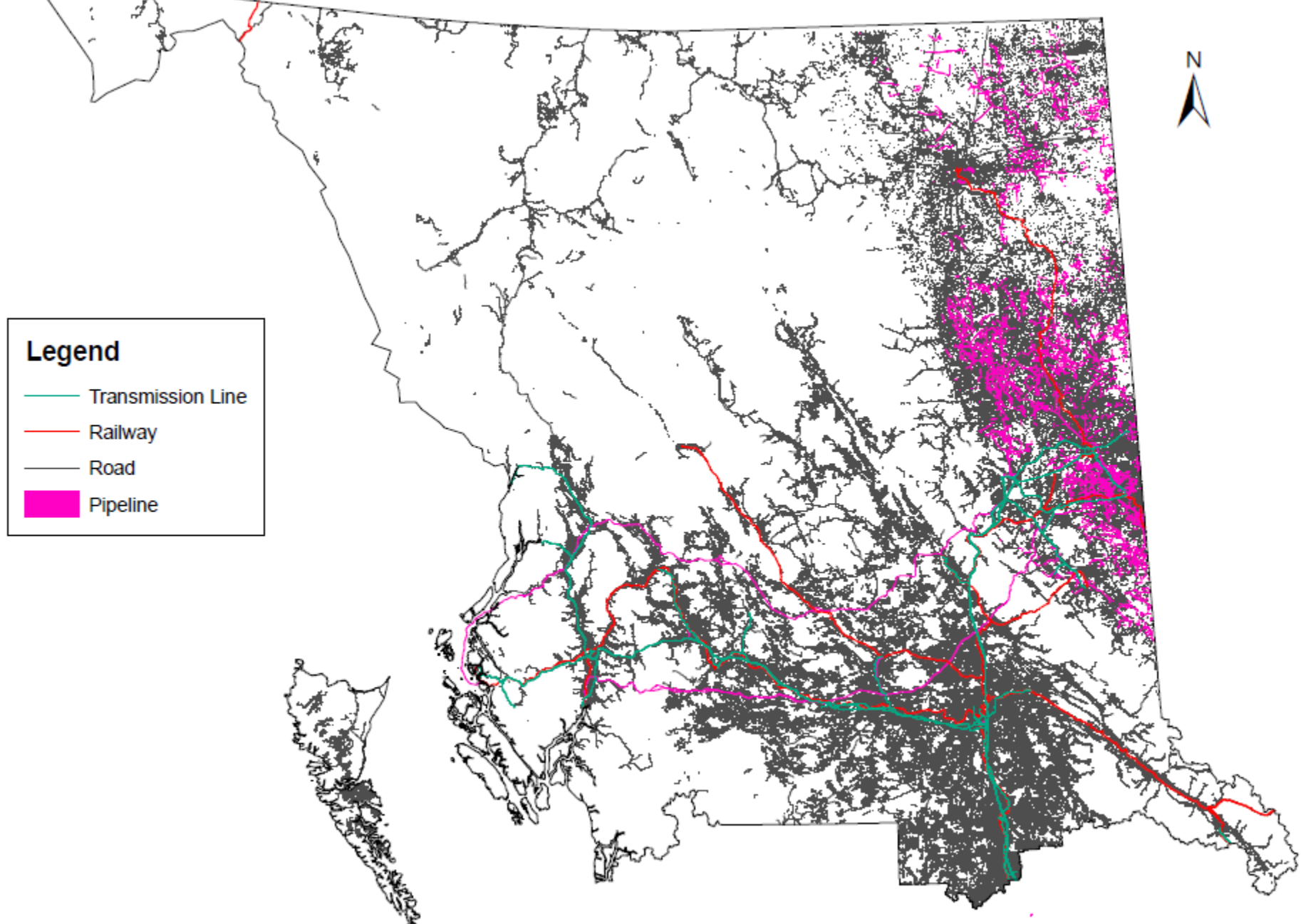
# Natural Resource Industries - Northern British Columbia



## Legend

- Major Projects
- Cattle Infrastructure
- Major Highways
- Forestry Cutblocks
- Oil & Gas Fields
- Mines, Placers, Coal Titles

# Right of Ways - Northern British Columbia

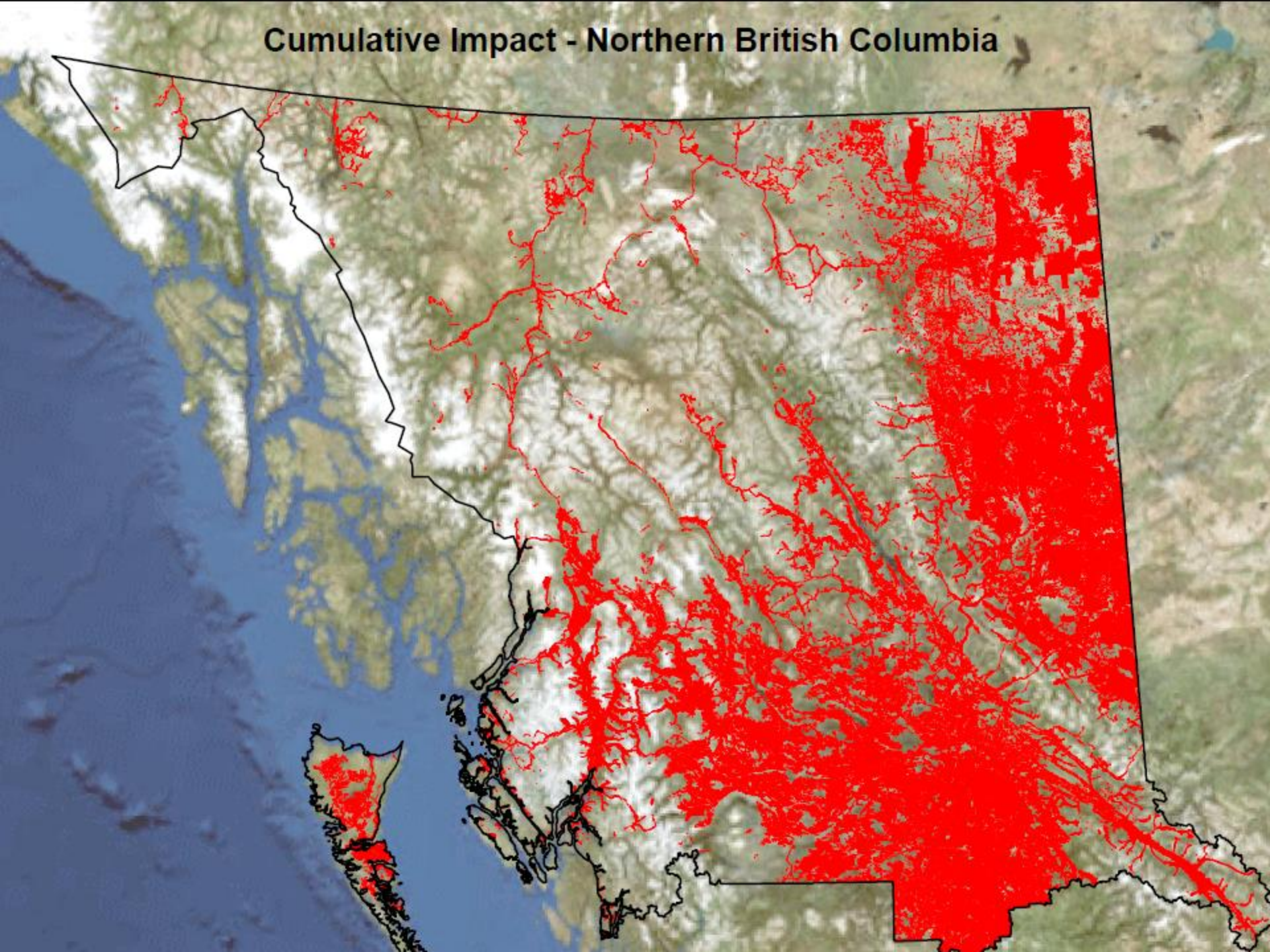


**Legend**

- Transmission Line
- Railway
- Road
- █ Pipeline

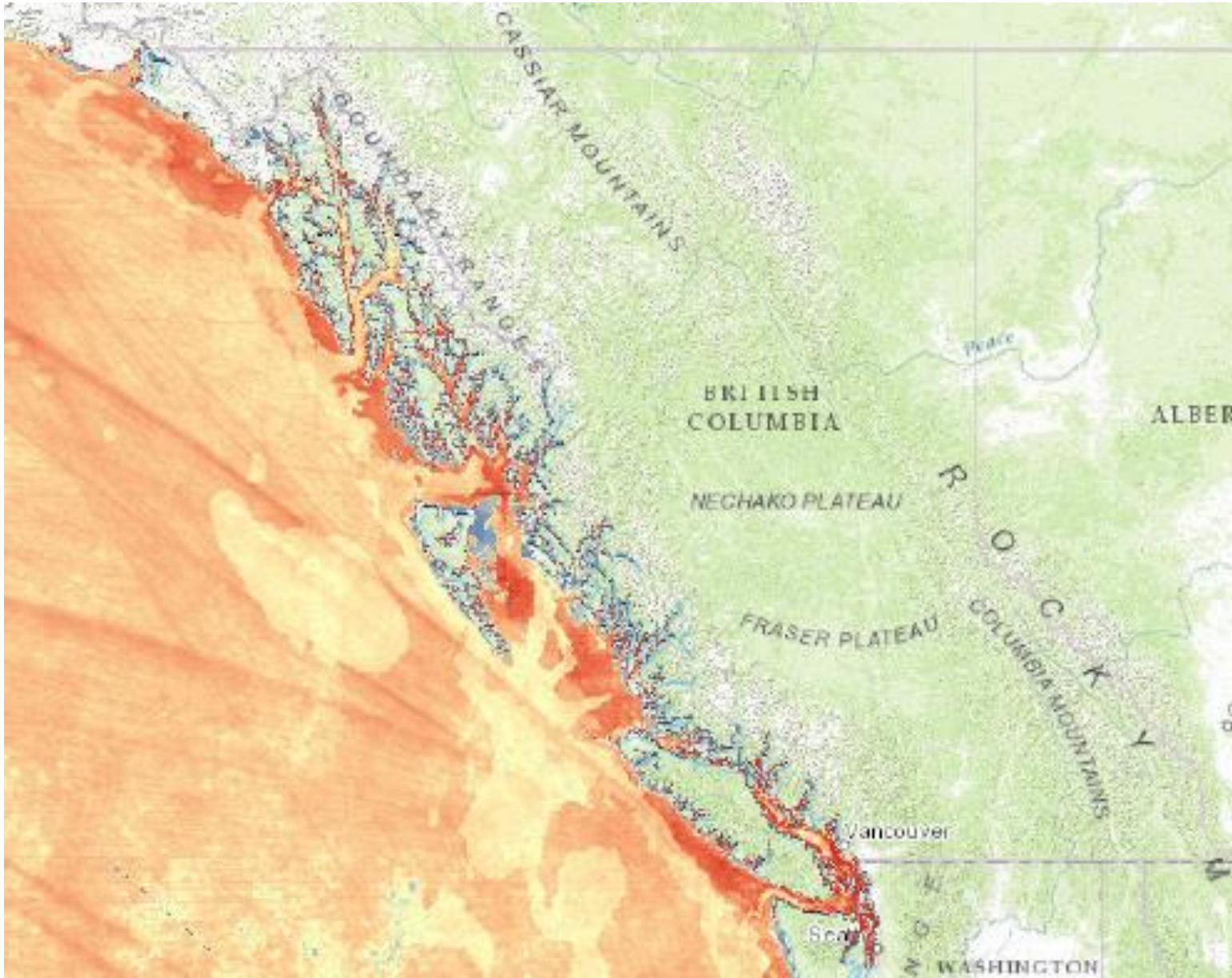


# Cumulative Impact - Northern British Columbia





# Cumulative Effects on BC's Coast



Map Credit: McClintock, SeasSketch



**Who are we?**

# Introducing the CIRC

- CIRC is a community outreach and research initiative at UNBC seeking to understand the cumulative impacts of resource development across northern BC
- We are collaboratively led by the Health Research Institute, the Community Development Institute, and the Natural Resources and Environmental Studies Institute; and governed by a tri-institute Steering Committee and Advisory Committee of northern stakeholders

CIRC

The Cumulative Impacts  
Research Consortium

**UNBC** UNIVERSITY OF  
NORTHERN BRITISH COLUMBIA

# CIRC Governance Composition

## Steering Committee

**Present:** Greg Halseth (CDI);  
Marleen Morris (CDI); Margot  
Parkes (HRI – on sabbatical);  
Henry Harder (HRI); Rachael  
Wells (HRI); Art Fredeen  
(NRESi); Michelle Connolly  
(PICS)

**Past:** Kyle Aben (PICS); Leanne  
Elliott (NRESi)

## Advisory Committee

**Present:** John Disney; Lana  
Lowe; Joan Chess; Jennifer  
Pighin; Nicole Cross; Andy  
Ackerman; Viva Wolf; Richard  
Kabzems; Wayne Salewski;  
Sandra Harris; Charl  
Badenhorst; Alan Madrigga;  
Rob Spitzer

**What do we do?**

# CIRC Approach to Community Engagement

- Principles to guide action:
  - Multistakeholder participation
  - Sustainability (in its broadest sense)
  - Large landscape vision
  - Integration
- Rooted in 3 interrelated goals:
  1. Education
  2. Sharing
  3. Knowledge to action



# Education: Understanding Cumulative Effects/Impacts



# Sharing: Building Dialogue Across Northern BC



CIRC

The Cumulative Impacts  
Research Consortium

**UNBC** UNIVERSITY OF  
NORTHERN BRITISH COLUMBIA

# Knowledge to Action: Promoting Capacity



- Leveraging multiple ways of knowing into concrete partnerships and future directions for practice

# Community Needs Identification

- “Lots of data, little information”
- Need for higher degree of meaningful and transparent community participation in research and resource development planning/operation
- Need for change by identifying entry points to address cumulative impacts before they emerge

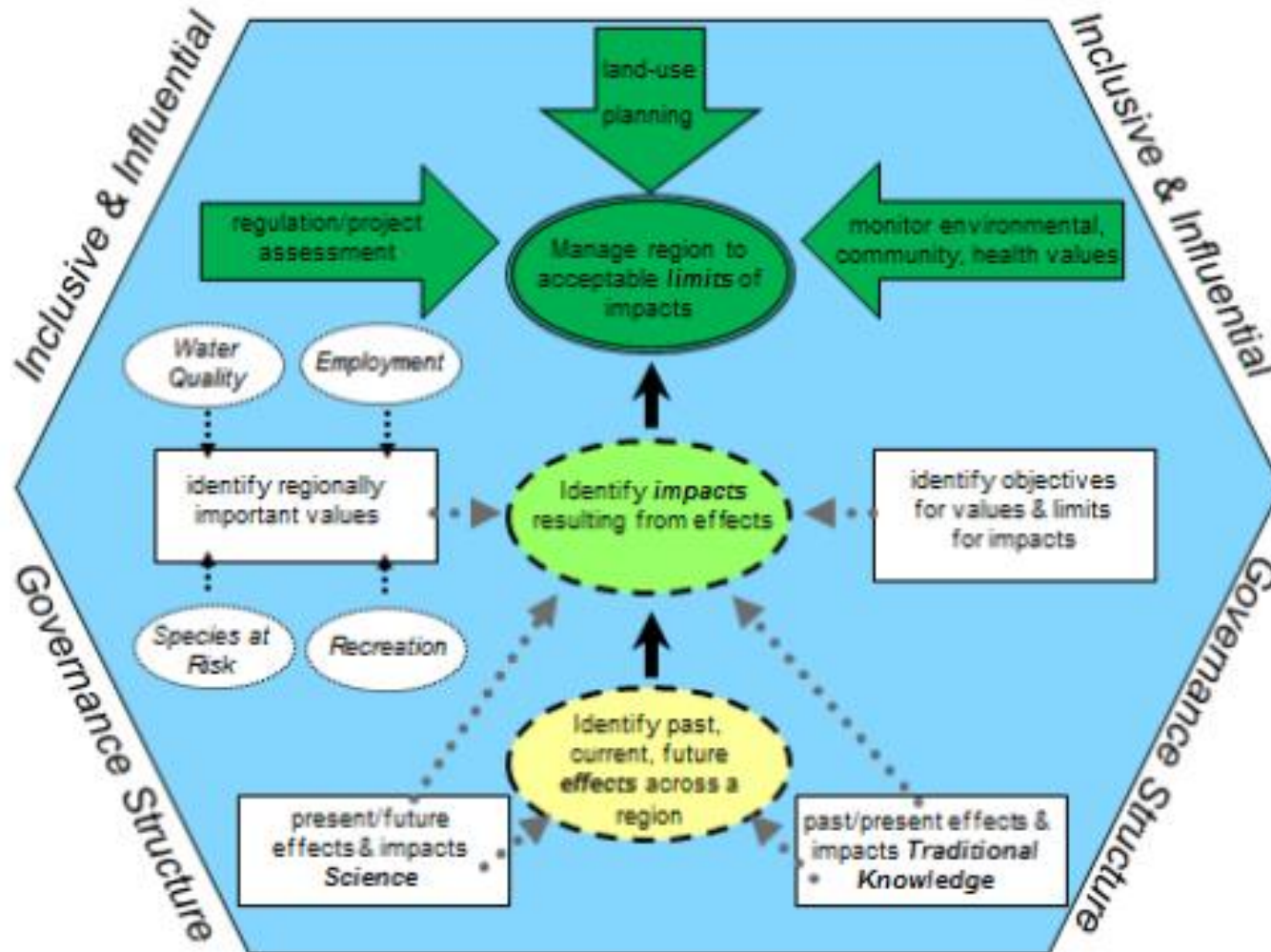


# Next Steps for CIRC - Engagement

- Upcoming events:
  - Vanderhoof, BC – April 7, 2016 | 6-8PM | Nechako Senior Friendship Centre
  - Taylor, BC – April 18-20<sup>th</sup> | Taylor Community Centre | NEBC Upstream Update
  - Quesnel, BC – April 2016 (TBD) | Quesnel Town Hall
- Planning events in Prince Rupert, Smithers and Fort Nelson for summer/fall



# CIRC: Research



Source: Gillingham et al. (forthcoming)

# CIRC: On-going Research

1. Examining the community impacts of unconventional natural gas development in BC along the supply chain (SSHRC)
2. Health Impacts of Resource Extraction and Development (NHA/FNHA)
3. Living library of CE Projects (PICS)

# CIRC: Future Research

1. Examining the 'state of the art' of CEA in BC through interjurisdictional comparative case studies (UNBC / NSERC)
2. Developing new tools to assist decision-makers in assessing, monitoring and planning for cumulative impacts (BC Real Estate Foundation, w/ 3 community partners)
3. Environmental and Community Health Observatory (CIHR, w/ 5 university partners, 10+ community partners)
4. Socioeconomic indicator development and storage (HRI w/ NHA and BC CDC)

# Reflections on the Future of CE Practice

1. **'Loopholes' and project size**
2. From consultation to participatory co-management and community-based assessment (Sinclair and Diduck 2016)
3. Integrating resilience thinking (Whitelaw and McCarthy 2016)

# 1. 'Loopholes' and project size

- Possible changes for CEA to be applied not only to 'major projects', but also smaller projects that have significant social, cultural and environmental implications
- Adequately accounting for clusters of projects
  - E.g. multiple run of river hydroelectric dams

# Reflections on the Future of CE Practice

1. 'Loopholes' and project size
2. **From consultation to participatory co-management and community-based assessment (Sinclair and Diduck 2016)**
3. Integrating resilience thinking (Whitelaw and McCarthy 2016)

## 2. From Consultation to Consent...

Taku River Tlingit First Nation v. British Columbia (Project Assessment Director),  
[2004] 3 S.C.R. 550, 2004 SCC 74

Haida Nation v. British Columbia (Minister of Forests), [2004] 3 S.C.R. 511, 2004  
SCC 73



**SUPREME COURT OF CANADA**

**CITATION:** Tsilhqot'in Nation v. British Columbia, 2014 SCC 44, **DATE:** 20140626  
[2014] 2 S.C.R. 256 **DOCKET:** 34986

# ...From Consent to Participatory Co-Management and Reconciliation



Skwxwú7mesh Úxwumixw | Squamish Nation  
Chiefs & Council

October 16, 2015

On October 14, 2015 Squamish Nation Council voted to approve an Environmental Assessment Agreement for the proposed Woodfibre LNG facility project.

To be clear, this decision is only for the LNG facility project and not the pipeline project proposed by Fortis BC. Therefore, the decision to approve this Environmental Agreement is not an approval of the whole LNG project, only a conditional approval of part of it.

Based on this decision the Squamish Nation has now issued an Environmental Certificate to Woodfibre LNG Ltd (“WLNG”).



# Reflections on the Future of CE Practice

1. 'Loopholes' and project size
2. From consultation to participatory co-management and community-based assessment (Sinclair and Diduck 2016)
3. Integrating resilience thinking (Whitelaw and McCarthy 2016)

# 3. Integrating resilience thinking into CEA

- Committing CEA and EA to social, economic, cultural and environmental sustainability
- Relevant considerations for assessing resilience in a social-ecological system (Resilience Alliance 2010):
  - Describe the system (resilience to what, for whom)
  - Determine system dynamics
  - Identify interactions between component parts
  - Detail system governance
  - Act on the assessment

**Not just ‘bounce back’, but ‘bounce forward’**

# We want to hear from you!

chris.buse@unbc.ca | 778.349.4242 | @CIRC\_UNBC

[www.unbc.ca/cumulative-impacts](http://www.unbc.ca/cumulative-impacts)



CIRC

The Cumulative Impacts  
Research Consortium

**UNBC** UNIVERSITY OF  
NORTHERN BRITISH COLUMBIA